

2024

EXPERIENCE YOUR EVERYWHERE

supex

WELCOME

For 50 years, our family's love for the great outdoors has driven Supex, a brand born from our genuine passion to equip fellow adventurers with top-notch gear.

It all started when Grandpa bought a metal fabrication company in Sydney back in '73. He started sharing creations designed for his own adventures, quickly transforming the business into one of Australia's top camping, RV, and caravan brands.

Three generations later, we continue to inspire and support adventurers and explorers with gear — and advice — they can trust.

from the team at Supex.







TOUR & RV

<i>RV ESSENTIALS & ACCESSORIES</i>	<i>6</i>
<i>CARAVAN AWNING & ACCESSORIES</i>	<i>22</i>
<i>ENSUITE</i>	<i>32</i>
<i>ELECTRICAL & 12V</i>	<i>38</i>
<i>RV & TRAILER HARDWARE</i>	<i>50</i>

RV ESSENTIALS & ACCESSORIES

WHEEL RAMPS & CHOCKS	8
CLOTHES AIRERS	9
CARAVAN HOSE & FITTINGS	10
STORAGE BAGS	11
CUSTOM CARAVAN STARTER PACKS	12
CARAVAN STEPS	14
CARAVAN ACCESSORIES	16
COLLAPSIBLES	17
CARAVAN ANNEXE MATTING	20
POLE CARRIER	21



WHEEL RAMPS & CHOCKS



SINGLE AXLE WHEEL LEVELLING RAMP

CODE: SRWLS

- To suit single axle vans
- Weight Rating: 5 tonnes
- Includes carry bag, two ramps, two chocks

Dimensions:
560mm (l) x 200mm (w) x 130mm (h)



DUAL AXLE WHEEL LEVELLING RAMP

CODE: SRWLD

- To suit dual axle vans
- Weight Rating: 5 tonnes
- Includes carry bag, two ramps, two chocks

Dimensions:
430mm (l) x 195mm (w) x 90mm (h)

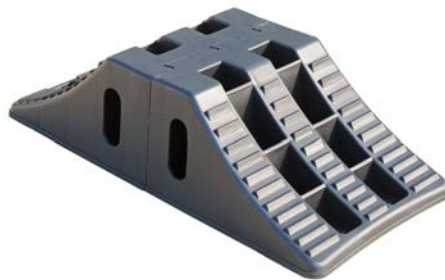


WHEEL CHOCK

CODE: SRWWCH

- Wheel chock with rubber grip along base

Dimensions:
210mm (l) x 200mm (w) x 110mm (h)

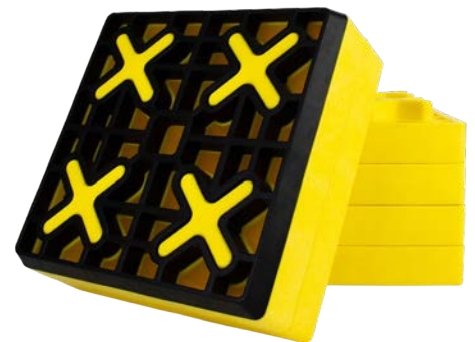


DUAL AXLE WHEEL CHOCK

CODE: SRWWCHD

- Interlocking poly wheel chock for tandem wheel caravans
- Separable for single wheel caravans
- Rubber grip along base

Dimensions:
450mm (l) x 209mm (w) x 119mm (h)



RV LEVEL BLOCK SET

CODE: SRWLCHB

- Six piece set to customise ramp height to suit ground and vehicle
- Includes carry bag
- Made from HDPE and rubber

Dimensions:
215mm (l) x 215mm (w) x 40mm (h)

CLOTHES AIRERS



EASY HANG CLOTHESLINE

CODE: CLSS8 | To suit 8' awning
CODE: CLSS9 | To suit 9' awning
CODE: CLSS10 | To suit 10' awning
CODE: CLSS11 | To suit 11' awning
CODE: CLSS12 | To suit 12' awning
CODE: CLSS13 | To suit 13' awning

CODE: CLSS14 | To suit 14' awning
CODE: CLSS15 | To suit 15' awning
CODE: CLSS16 | To suit 16' awning
CODE: CLSS17 | To suit 17' awning
CODE: CLSS18 | To suit 18' awning
CODE: CLSS19 | To suit 19' awning

CODE: CLSS20 | To suit 20' awning
CODE: CLSS21 | To suit 21' awning
CODE: CLSS22 | To suit 22' awning
CODE: CLSS23 | To suit 23' awning
CODE: CLSS24 | To suit 24' awning
CODE: CLSS25 | To suit 25' awning

- Stainless steel easy hang clothesline
- Includes one line per pack
- Note: pictured with two lines



FOLDING CLOTHES AIRER

CODE: CD2

- Strong, lightweight aluminium frame with tri-leg design for maximum stability
- Collapsible for easy transportation
- Includes carry bag and ground pegs

Dimensions:
Diagonal: 150cm x 150cm (w)
Legs: 96cm (w) / Assembled: 140 - 145cm (h)

CARAVAN HOSE & FITTINGS

MADE IN AUSTRALIA



DRINKING WATER HOSE

CODE: DRW10

10m coil hose, fittings not inc.

CODE: DRW20

20m coil hose, fittings not inc.

CODE: DRW10HF

10m coil hose, fittings inc. tap ready

CODE: DRW20HF

20m coil hose, fittings inc., tap ready

- Food grade drinking water hose, 12mm

MADE IN AUSTRALIA



DRINKING WATER HOSE, BLACK

CODE: DRW1230

12mm dia. x 30m coil

CODE: DRW2530

25mm dia. x 30m coil

- Food grade drinking water hose, black
- Liquid transfer hose, non-pressure



DRINKING WATER HOSE FITTINGS

1. CODE: HC4035

Hose repairer, 12mm

2. CODE: HC4011

Sprinkler adaptor, 19mm BSP tail

3. CODE: HC4111

Hose connector, 12mm

4. CODE: HC4018

Tap nut adaptor, 19mm and 25mm

5. CODE: HCSETB

Four piece brass hose fitting set; for 12mm hose

MADE IN AUSTRALIA



SULLAGE HOSE

AUSTRALIAN MADE HOSE:

CODE: SUL2510 | 25MM DIA. X 10M COIL

CODE: SUL2810 | 28MM DIA. X 10M COIL

CODE: SUL3210 | 32MM DIA. X 10M COIL

CODE: SUL3810 | 38MM DIA. X 10M COIL

IMPORTED HOSE:

CODE: ISH2510 | 25MM DIA. X 10M COIL

CODE: ISH285 | 28MM DIA. X 5M COIL

CODE: ISH2810 | 28MM DIA. X 10M COIL

CODE: ISH325 | 32MM DIA. X 5M COIL

CODE: ISH3210 | 32MM DIA. X 10M COIL

CODE: ISH385 | 38MM DIA. X 5M COIL

CODE: ISH3810 | 38MM DIA. 10M COIL

- For effective grey water drainage
- Smooth bore style reduces particle blockage
- Strong, flexible material prevents holes and leaks



EXTRA FLEX. SULLAGE HOSE

CODE: SUL5F | 25mm dia. x 5m coil

- Interlockable extra flexible sullage hose
- With 40mm adaptor and interlockable threaded end to join two hoses together for 10m length
- Strong material prevents holes and leaks

HOSE FITTINGS & STORAGE BAGS



- 1. CODE: SH25D | Director, 25mm
- 2. CODE: SH25J | Joiner, 25mm
- 3. CODE: SH25NT | Nut & tail, 25mm
- 4. CODE: SH1425D | Director, 14mm/25mm
- 5. CODE: SH32D | Director, 32mm
- 6. CODE: SH32NT | Nut & tail, 32mm
- 7. CODE: SH38NT | Nut & tail, 38mm
- 8. CODE: SH32J | Joiner, 32mm
- 9. CODE: SH38J | Joiner, 38mm

- 10. CODE: SH38D | Director, 38mm
- 11. CODE: SH4020RN | Reducing nipple, 40mm/20mm
- 12. CODE: SH4025RN | Reducing nipple, 40mm/25mm
- 13. CODE: SH4032RN | Reducing nipple, 40mm/32mm
- 14. CODE: SH4020RB | Reducing bush, 40mm/20mm
- 15. CODE: SH4025RB | Reducing bush, 40mm/25mm

- 16. CODE: SH4032RB | Reducing bush, 40mm/32mm
- 17. CODE: HCATA | American thread adaptor, 1 1/16"
- 18. CODE: SHDC25 | Dust cap to suit 25mm tube
- 19. CODE: SHCAM | CAM fitting, fits 25mm - 38mm
- 20. CODE: SHCAMP | Male fitting to suit SHCAM

FRESH WATER HOSE STORAGE BAG

CODE: SHB



- Small hose bag to suit 10m fresh water hose or 5m sullage hose

Dimensions:
340mm dia.

SULLAGE HOSE STORAGE BAG

CODE: LHB



- Large hose bag to suit 20m fresh water hose or 10m sullage hose

Dimensions:
480mm dia.

ELECTRICAL LEAD STORAGE BAG

CODE: LB10



- Holds up to 20m of extension lead

Dimensions:
340mm dia.

HOSE & LEAD STORAGE BAG SET

CODE: HB3PK



- Includes 1 x Fresh Water Hose Storage Bag, 1 x Sullage Hose Storage Bag and 1 x Electrical Lead Storage Bag

CUSTOM CARAVAN STARTER PACKS



STANDARD CARAVAN STARTER PACK

CODE: SCSP

Contains:

- 1 x 10m drinking water hose with fittings
- 1 x 10m sullage hose, 25mm dia.
- 1 x 10m, 15amp caravan lead
- 1 x Fresh Water Hose storage bag
- 1 x Sullage Hose storage bag
- 1 x Electrical Lead bag

Comes in a reusable bag

FULLY CUSTOMISED

ADJUST PACK ITEMS TO YOUR REQUIREMENTS

INCLUDE YOUR BRANDING

CUSTOM CARAVAN STARTER PACKS



DELUXE CARAVAN STARTER PACK

CODE: DCSP

Contains:

- 1 x 10m drinking water hose with fittings
- 1 x 10m sullage hose, 25mm dia.
- 1 x 10m, 15amp caravan lead
- 1 x Fresh Water Hose storage bag
- 1 x Sullage Hose storage bag
- 1 x Electrical Lead bag
- 1 x T-level
- 1 x levelling ramp set

Comes in a reusable bag

FULLY CUSTOMISED

ADJUST PACK ITEMS TO YOUR REQUIREMENTS

INCLUDE YOUR BRANDING

CARAVAN STEPS

PLASTIC FIXED CARAVAN STEP

CODE: STP2

- Durable plastic fixed step
- Weight Rating: 80kg

Dimensions: 345mm (d) x 500mm (w) x 230mm (h)



HEAVY DUTY ADJUSTABLE STEP

CODE: STP4

- Heavy duty steel frame with folding legs
- Non-slip tread
- Four stage height adjustment, up to 220mm high
- Weight Rating: 300kg

Dimensions: 370mm (d) x 480mm (w) x 220mm (h)



TWO STAGE FOLDING STEP

CODE: DBSP

- Two stage folding step with zinc finish
- Weld or bolt on to caravan or camper trailer
- Unit weight: 11kg
- Weight Rating: 150kg

Open Dimensions: 750mm (d) x 535mm (w) x 180mm (h)
Closed Dimensions: 300mm (d) x 535mm (w) x 180mm (h)



CARAVAN STEPS



ALUMINIUM CARAVAN STEP

CODE: STP3

- Aluminium frame with folding legs
- Non-slip tread
- Weight Rating: 150kg

Dimensions: 300mm (d) x 480mm (w) x 220mm (h)



ALUMINIUM CARAVAN STEP, BLACK

CODE: STP3B

- Black aluminium frame with folding legs
- With luminous strip & non-slip tread
- Weight Rating: 150kg

Dimensions: 300mm (d) x 480mm (w) x 220mm (h)



TWO STAGE ALUMINIUM STEP

CODE: STP6

- Two stage step, folds flat for easy storage
- Weight Rating: 150kg

Step Dimensions: 225mm (d) x 350mm (w)
Overall Height: 380mm
Lower Step Height: 180mm



TWO STAGE ALUMINIUM STEP, BLACK

CODE: STP6B

- Black two stage step, folds flat for easy storage
- With luminous strip
- Weight Rating: 150kg

Step Dimensions: 225mm (d) x 350mm (w)
Overall Height: 380mm
Lower Step Height: 180mm

CARAVAN ACCESSORIES

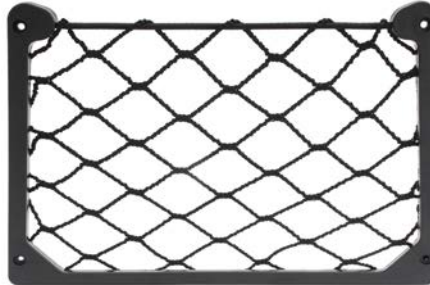


FIRST AID KIT

CODE: FIAIK

- Includes the essentials for treating minor injuries contained in a reinforced fabric bag
- Bag provides protection against water & dust
- Complies with AS 2675-1983 Portable First Aid Kits for Use by Consumers

Dimensions:
90mm (d) x 140mm (w) x 110mm (h)



MAGAZINE HOLDER

CODE: MGZH

- Storage solution for magazines and books
- Fastens onto the back of RV shelving
- Plastic frame with 5mm dia. elastic rope
- Screws included

Dimensions:
355mm (w) x 185mm (h)



T LEVEL

CODE: CL1

- Made from UV resistant high impact plastic
- Comes in a hang sell pack

Dimensions:
60mm (l) x 45mm (w) x 15mm (d)



CARAVAN SINK PLUG

CODE: SRCSP25 | BULK
CODE: SRCSP25P | HANG SELL PACK

- Made from soft rubber

Dimensions:
25mm dia.



CARAVAN FILTER

CODE: SRCR20

- Portable caravan inline water filter with brass hose connectors for caravan or motor home
- Incorporates carbon filtration with SilverPlus™ antibacterial technology
- Inhibits bacteria growth and removes unwanted taste, odours and chemicals

Specifications:
Rating: 1 micron
Dimensions: 70mm (dia.) x 300mm (h)
Connection: garden hose 1/2"
Min/max hose flow: 0 - 20 litres per minute
Min/max temperature: 2° - 38°
Min/max pressure: 200 - 860 kPa



SINK HAND PUMP

CODE: SHP1

- Double action manual pump operation for water on up and down strokes
- Self priming, releases water at any time
- Manufactured from corrosion resistant nylon with polyurethane interior seals and an anodised aluminium barrel
- Includes bonus repair kit

Specifications:
Pump extends 97mm above bench top
Spout extends 140mm from centreline of pump
Maximum bench thickness - 25mm
Bench top to hose fitting distance - 185mm

COLLAPSIBLE CONTAINERS & FOOD PREP



ROUND CONTAINERS, 4PK

CODE: CLP6

- Set of four round containers
- Dishwasher safe
- Collapsed height: 120mm stacked

400mL - 120mm (dia.) x 64mm (h)
600mL - 140mm (dia.) x 64mm (h)
880mL - 160mm (dia.) x 69mm (h)
1250mL - 190mm (dia.) x 74mm (h)



RECTANGLE CONTAINERS, 4PK

CODE: CLP12

- Set of four rectangular containers
- Dishwasher safe
- Collapsed height: 120mm stacked

350mL - 83mm (d) x 118mm (w) x 64mm (h)
540mL - 93mm (d) x 151mm (w) x 64mm (h)
800mL - 107mm (d) x 172mm (w) x 64mm (h)
1200mL - 122mm (d) x 210mm (w) x 74mm (h)



DISH DRAINER

CODE: CLP1

- Made from silicone and plastic

Dimensions: 315mm (d) x 365mm (w) x 125mm (h)
Collapsed height: 50mm



DOUBLE HANDLE COLANDER

CODE: CLP29 | BLUE
CODE: CLP30 | GREY

- Dishwasher safe
- Can be used as a steamer, fits inside 1.5L collapsible saucepan

Dimensions: 200mm (dia.) x 85mm (h)
Collapsed height: 35mm

COLLAPSIBLE COOKWARE



COLLAPSIBLE BOWL

CODE: CLP2

- Collapsible bowl for multi-purpose use

Dimensions: 380mm (dia.) x 160mm (h)
Collapsed height: 50mm



COLLAPSIBLE KETTLE

CODE: CLP19 | BLUE
CODE: CLP20 | GREY

- Collapsible, dishwasher safe kettle for use on stovetop, hob or cooker
- Made from stainless steel, silicone and PA
- Collapsed height: 50mm
Note: Not suitable for induction cooktops

Volume: 1.2L
Dimensions: 70mm (d) x 195mm (w) x 225mm (h)



COLLAPSIBLE SAUCEPAN

CODE: CLP13 | Blue, 1L. 160mm (dia.) x 90mm (h) - open
CODE: CLP14 | Blue, 1.5L. 200mm (dia.) x 85mm (h) - open
CODE: CLP15 | Blue, 3L. 240mm (dia.) x 125mm (h) - open
CODE: CLP16 | Grey, 1L. 160mm (dia.) x 90mm (h) - open
CODE: CLP17 | Grey, 1.5L. 200mm (dia.) x 85mm (h) - open
CODE: CLP18 | Grey, 3L. 240mm (dia.) x 125mm (h) - open

- Collapsible, dishwasher safe saucepan for use on stovetop, hob or cooker with anti-slip lid edge design
- Made from stainless steel, silicone and glass
- Collapsed height: 50mm
Note: Not suitable for induction cooktops



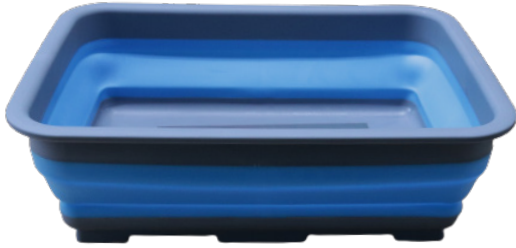
COLLAPSIBLE FRYPAN

CODE: CLP31 | BLUE
CODE: CLP32 | GREY

- Collapsible frying pan for use on stovetop, hob or cooker
- Non-stick stainless steel surface with folding handle
- Collapsed height: 58mm
Note: Not suitable for induction cooktops

Dimensions: 240mm (dia.) x 85mm (h) - open

COLLAPSIBLE TUBS & BASKETS



RECTANGLE DISH

CODE: CLP3

Dimensions:
270mm (d) x 370mm (w) x 120mm (h)

Collapsed height: 50mm



BASIN WITH HANDLES

CODE: CLP9

Dimensions:
285mm (d) x 380mm (w) x 140mm (h)

Collapsed height: 50mm



BUCKET

CODE: CLP4

Dimensions:
330mm (dia.) x 250mm (h)

Collapsed height: 50mm



WASH TUB / SINK

CODE: CLP7

- With draining hole

Dimensions:
300mm (d) x 320mm (w) x 175mm (h)
Collapsed height: 50mm



SMALL BASKET

CODE: CLP8

Dimensions:
375mm (d) x 500mm (w) x 205mm (h)
Collapsed height: 60mm



LARGE BASKET

CODE: CLP28

Dimensions:
460mm (d) x 610mm (w) x 270mm (h)
Collapsed height: 85mm

CARAVAN ANNEXE MATTING



GREY



GREEN



BLUE

PVC FOAM CARPET

CODE: FC1 | Roll; 2.50m (w) x 30m (l)
CODE: FC2 | 2.50m (w) x 3.00m (l)
CODE: FC3 | 2.50m (w) x 3.50m (l)

CODE: FC4 | 2.50m (w) x 4.00m (l)
CODE: FC5 | 2.50m (w) x 4.50m (l)
CODE: FC6 | 2.50m (w) x 5.00m (l)

CODE: FC7 | 2.50m (w) x 5.50m (l)
CODE: FC8 | 2.50m (w) x 6.00m (l)
CODE: FC9 | 2.50m (w) x 7.00m (l)

Premium quality, heavy duty PVC foam carpet for use under caravan and camper trailer annexes. The design provides comfort underfoot and allows sand and dirt to fall through whilst ensuring minimal damage to grass underneath.

- Low maintenance; shake and wipe clean
- Non-slip, UV resistant design
- Mould and mildew resistant
- Manufactured from PVC foam mesh
- Includes carry bag



MESH GROUND MATTING

CODE: MGM8X8 | 8ft (w) x 8ft (l) | 2.40m (w) x 2.40m (l)
CODE: MGM10X10 | 10ft (w) x 10ft (l) | 3.00m (w) x 3.00m (l)
CODE: MGM10X20 | 10ft (w) x 20ft (l) | 3.00m (w) x 6.00m (l)
CODE: MGM12X12 | 12ft (w) x 12ft (l) | 3.70m (w) x 3.70m (l)

Economy mesh ground matting for use under gazebos. Mesh-style matting allows the grass underneath to breathe whilst providing protection underfoot.

- Reinforced with eyelets at 80cm intervals
- Can be used for under-tent floor saver
- UV stabilised
- Manufactured from 180GSM shade cloth
- Includes carry bag

POLE CARRIER



POLE CARRIER

CODE: PC160 | 150MM (DIA.) X 1.60M (L) | WHITE
CODE: PC180 | 150MM (DIA.) X 1.80M (L) | WHITE
CODE: PC200 | 150MM (DIA.) X 2.00M (L) | WHITE
CODE: PC220 | 150MM (DIA.) X 2.20M (L) | WHITE

CODE: PC160B | 150MM (DIA.) X 1.60M (L) | BLACK
CODE: PC180B | 150MM (DIA.) X 1.80M (L) | BLACK
CODE: PC200B | 150MM (DIA.) X 2.00M (L) | BLACK
CODE: PC220B | 150MM (DIA.) X 2.20M (L) | BLACK

- Heavy duty plastic pole holder for tent poles, anti-flap kits and fishing rods
- Easily lockable on both ends; remove the Quik clips and add padlocks
- Can be fitted to caravan chassis or vehicle roof rack
- Mounting brackets included
- White Pole Carrier made from UPVC / Black Pole Carrier made from HDPE
- Four sizes and two colours available

MOUNTING BRACKETS

CODE: PCMBS

- Bolt on mounting brackets for pole carrier
- Suitable for up to 150mm chassis of caravan or camper trailer
- Suits 150mm dia. pole carrier
- Made from zinc plated steel
- Sold as a pair



CARAVAN AWNING & ACCESSORIES

SECURA BAR	24
CURVED ROOF RAFTER	25
BAR & RAFTER SPARE PARTS	26
CARAVAN AWNING ACCESSORIES	27
PRIVACY SCREENS	30



SECURA BAR



SECURA BAR, WHITE

CODE: ASWS | SMALL, EXTENDABLE LENGTH: 210CM - 220CM
CODE: ASWM | MEDIUM, EXTENDABLE LENGTH: 220CM - 230CM
CODE: ASWL | LARGE, EXTENDABLE LENGTH: 230CM - 240CM



SECURA BAR, BLACK

CODE: ASBS | SMALL, EXTENDABLE LENGTH: 210CM - 220CM
CODE: ASBM | MEDIUM, EXTENDABLE LENGTH: 220CM - 230CM
CODE: ASBL | LARGE, EXTENDABLE LENGTH: 230CM - 240CM



SECURA BAR CARRY BAG

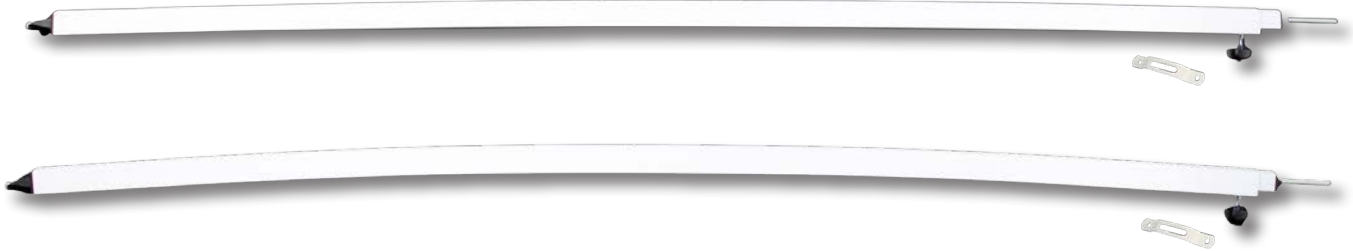
CODE: ASCB

- Six pockets to fit 1 x Secura Bar anti-flap kit set and 2 x Curved Roof Rafters
- Manufactured from polypropylene

Dimensions:
1530mm (l) x 630mm (w)

CURVED ROOF RAFTER

**AVAILABLE WITH CLIP
ENDS ON REQUEST**



POWDERCOATED ALUMINIUM CURVED ROOF RAFTER, WHITE

CODE: 563V | SLIGHT CURVE, MAX. LENGTH: 243CM (8FT)
CODE: 563VA | ACUTE CURVE, MAX. LENGTH: 243CM (8FT)



POWDERCOATED ALUMINIUM CURVED ROOF RAFTER, BLACK

CODE: 563VB | SLIGHT CURVE, MAX. LENGTH: 243CM (8FT)
CODE: 563VAB | ACUTE CURVE, MAX. LENGTH: 243CM (8FT)

SECURA BAR & CURVED ROOF RAFTER SPARE PARTS



CURVED ROOF RAFTER END

CODE: 563RE

- Stainless steel roof rafter end
- Also suits Supex Secura Bar



CURVED ROOF RAFTER TURNING KNOB

CODE: 563TS

- Black plastic turning knob with stainless steel T-Nut to suit Curved Roof Rafter



CURVED ROOF RAFTER SPIGOT END

CODE: 563SP

- Steel spigot end, moulded black plastic base



SECURA BAR EXTENSION

CODE: ASEW | WHITE | SET OF 2
CODE: ASEB | BLACK | SET OF 2

- Extend Secura Bar to be usable on box and cassette style awnings
- Remove the existing hook, then slide the extension piece over

Dimensions:
100mm (l)



AWNING ADAPTOR BRACKET

CODE: 38T

- Adaptor bracket to attach your Secura Bar or Curved Roof Rafter to box / cassette style awning
- Attach bracket to lead rail of awning with screws or rivets



SECURA BAR TURNING KNOB

CODE: ASTK

- Replacement turning knob to suit Supex Secura Bar



SECURA BAR SPIGOT END

CODE: ASSP

- Steel spigot end to suit Supex Secura Bar



SECURA BAR HANDLE

CODE: ASHA

- Plastic handle assembly to tighten Supex Secura Bar

CARAVAN AWNING ACCESSORIES



AWNING TENSIONER / DE-FLAPPER

CODE: SRDF1

- Awning tensioner / de-flapper to secure a roll-out awning
- Velcro straps strengthen awning security and reduce wind damage
- Additional strap included for pop top caravans
- Pack of 1

Dimensions:
203mm (w)



AWNING BRACKET

CODE: 38AB

- Pole clip for roll out awnings
- Suits 6mm sail track



RUBBER LADDER STRAP

CODE: ANLADD

- Makes tying down annexes easy
- Multiple 'steps' in ladder allow for varying tie-down positions
- Perfect for uneven or rough terrain

Dimensions:
225mm (l) x 22mm (w)



POP TOP SUPPORT BAR

CODE: PTS | 22-25MM DIA. X 1.2WT WHITE FINISH | EXTENDS TO 50CM
CODE: PTS2 | 22-25MM DIA. X 1.2WT WHITE FINISH | EXTENDS TO 60CM



POP TOP SUPPORT BAR, JAYCO

CODE: PTSJ | TO SUIT JAYCO VAN | 22MM DIA. X 1200MM (L)

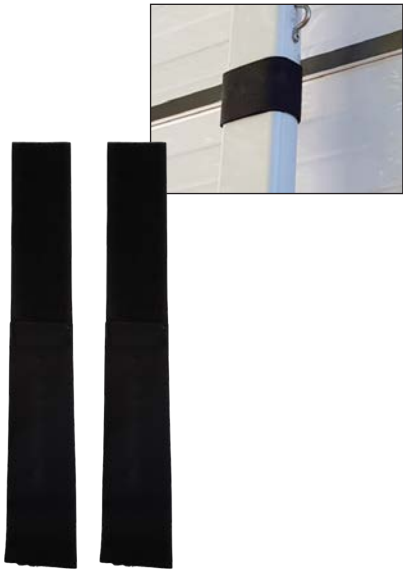


POP TOP SUPPORT DISPLAY BOX

CODE: PTSDB

- Cardboard display box
- Includes 14 x 50cm Pop Top Support Bars

CARAVAN AWNING ACCESSORIES



CARAVAN AWNING SAFETY STRAPS

CODE: CASS

- Velcro caravan awning safety straps
- Secure awning arms whilst travelling
- Pack of two



AWNING CENTRE SUPPORT CRADLE

CODE: WACS | WHITE
CODE: BACS | BLACK

- Support the centre weight of any roll out awning whilst travelling
- Available in black or white powder coated finish

Box includes:
1 x back panel, 1 x arm, 1 x cradle support, screw set



AWNING ROPE CLIPS

CODE: ARC

- Caravan awning rope clips to fit Dometic (A&E), Carefree and Aussie Traveller awnings
- Stainless steel
- Hang sell pack of two, available to buy in bulk



AWNING ROPE CLIP PACK

CODE: ARCPK

- Basic awning set up rope clip pack

Contains:
- Two guy ropes, two awning rope clips, two tent pegs

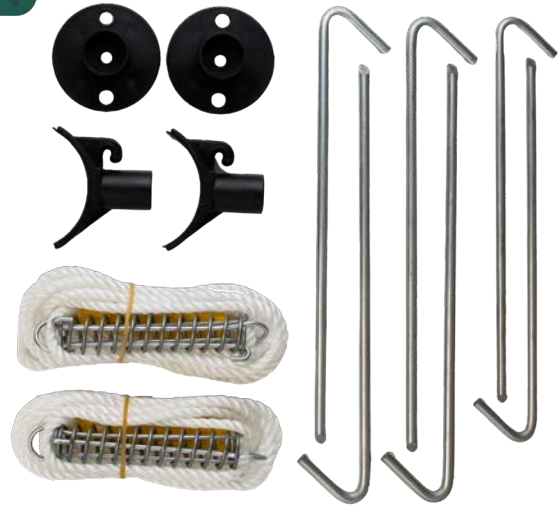
CARAVAN AWNING ACCESSORIES



12 AWNING ROPE CRADLE

CODE: ARCV | BULK
CODE: ARCVP | HANG SELL PACK OF TWO

- Awning rope cradles to suit Carefree 12V roll out awning



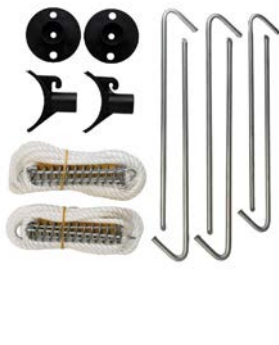
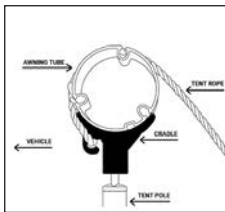
12 AWNING ROPE CRADLE BOX PACK

CODE: ARCVBP

- Basic set up cradle pack to suit Carefree 12V roll out awning

Contains:

- Two cradles, two ground plates, two guy ropes, four tent pegs (6mm x 225mm), two tent pegs (8mm x 300mm)



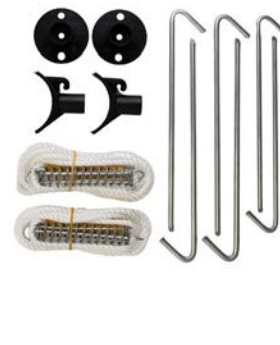
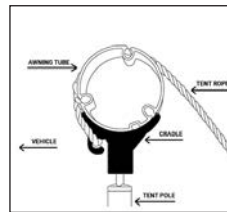
12 AWNING ROPE CRADLE POLE PACK, WHITE

CODE: ARCVPP

- Complete set cradle pack to suit Carefree 12V roll out awning

Contains:

- Two cradles, two ground plates, two guy ropes, four tent pegs (6mm x 225mm), two tent pegs (8mm x 300mm), two white 9ft aluminium poles



12 AWNING ROPE CRADLE POLE PACK, BLACK

CODE: ARCVPPB

- Complete set cradle pack to suit Carefree 12V roll out awning

Contains:

- Two cradles, two ground plates, two guy ropes, four tent pegs (6mm x 225mm), two tent pegs (8mm x 300mm), two black 9ft aluminium poles

PRIVACY SCREENS



LONG WALL PRIVACY SCREEN, GREY

CODE: SRPS28 | 2.80M (L) X 1.80M (H) | SUITS 10' AWNING
 CODE: SRPS34 | 3.40M (L) X 1.80M (H) | SUITS 12' AWNING
 CODE: SRPS37 | 3.70M (L) X 1.80M (H) | SUITS 13' AWNING
 CODE: SRPS40 | 4.00M (L) X 1.80M (H) | SUITS 14' AWNING
 CODE: SRPS42 | 4.26M (L) X 1.80M (H) | SUITS 15' AWNING
 CODE: SRPS46 | 4.60M (L) X 1.80M (H) | SUITS 16' AWNING
 CODE: SRPS48 | 4.87M (L) X 1.80M (H) | SUITS 17' AWNING
 CODE: SRPS52 | 5.20M (L) X 1.80M (H) | SUITS 18' AWNING
 CODE: SRPS55 | 5.50M (L) X 1.80M (H) | SUITS 19' AWNING

- Long wall privacy screen made to suit the Australian environment
- Shade rating: 95%, made from 199GSM fabric
- Exclusive to Supex
- Four year warranty
- Includes guy ropes, tent pegs and D-rings



LONG WALL PRIVACY SCREEN, BLACK

CODE: SRPS28B | 2.80M (L) X 1.80M (H) | SUITS 10' AWNING
 CODE: SRPS34B | 3.40M (L) X 1.80M (H) | SUITS 12' AWNING
 CODE: SRPS37B | 3.70M (L) X 1.80M (H) | SUITS 13' AWNING
 CODE: SRPS40B | 4.00M (L) X 1.80M (H) | SUITS 14' AWNING
 CODE: SRPS42B | 4.26M (L) X 1.80M (H) | SUITS 15' AWNING
 CODE: SRPS46B | 4.60M (L) X 1.80M (H) | SUITS 16' AWNING
 CODE: SRPS48B | 4.87M (L) X 1.80M (H) | SUITS 17' AWNING
 CODE: SRPS52B | 5.20M (L) X 1.80M (H) | SUITS 18' AWNING
 CODE: SRPS55B | 5.50M (L) X 1.80M (H) | SUITS 19' AWNING

- Long wall privacy screen made to suit the Australian environment
- Shade rating: 95%, made from 199GSM fabric
- Exclusive to Supex
- Four year warranty
- Includes guy ropes, tent pegs and D-rings



BONUS DROP PRIVACY SCREEN, 1.95M DROP

CODE: SRPSBD37 | 3.70M (L) X 1.95M (H) | SUITS 13' AWN.
 CODE: SRPSBD40 | 4.00M (L) X 1.95M (H) | SUITS 14' AWN.
 CODE: SRPSBD42 | 4.26M (L) X 1.95M (H) | SUITS 15' AWN.
 CODE: SRPSBD46 | 4.60M (L) X 1.95M (H) | SUITS 16' AWN.
 CODE: SRPSBD48 | 4.87M (L) X 1.95M (H) | SUITS 17' AWN.
 CODE: SRPSBD52 | 5.20M (L) X 1.95M (H) | SUITS 18' AWN.
 CODE: SRPSBD55 | 5.50M (L) X 1.95M (H) | SUITS 19' AWN.

- Bonus drop side wall privacy screen to suit off road caravans
- Shade rating: 95%, made from 199GSM fabric
- Exclusive to Supex
- Four year warranty
- Includes guy ropes, tent pegs & D-rings



END WALL CARAVAN PRIVACY SCREEN

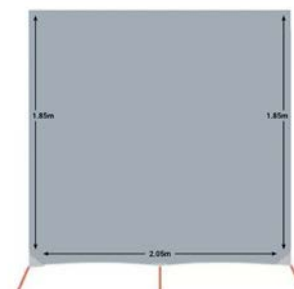
CODE: CAEPS | GREY |
 1.9M (W) X 2.3M (HIGH END) X 2.1M (LOW END)
 CODE: CAEPSB | BLACK
 1.9M (W) X 2.3M (HIGH END) X 2.1M (LOW END)
 CODE: CAEPSBD | END W. | 2.1M (W) X 2.5M (HIGH) X 2.1M (LOW)

- End wall privacy screen, exclusive to Supex with 4 year warranty
- Shade rating: 95%, made from 199GSM fabric
- Includes guy ropes, tent pegs and D-rings

POP TOP CARAVAN END WALL

CODE: PTAEPS | GREY
 2.05M (W) X 1.85M (H)
 CODE: PTAEPSB | BLACK
 2.05M (W) X 1.85M (H)

- Shade rating: 95%
- Manufactured from 199GSM fabric
- Exclusive to Supex
- Four year warranty
- Includes guy ropes, tent pegs & D-rings



PRIVACY SCREENS

ALL LONG WALL & END WALL
PRIVACY SCREENS HAVE A

4 YEAR WARRANTY

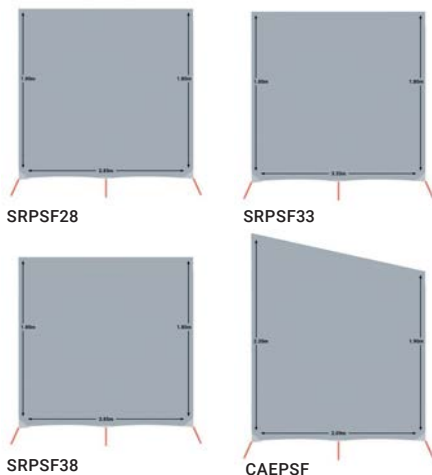


CARAVAN AWNING PORCH EXTENSION KIT

CODE: W5000P

- Extends awning space of any caravan setup
- Velcro and Keder splines run along top, easily attach privacy screen to awning arms
- Made from 560GSM fabric
- Includes guy ropes, tent poles and tent pegs

Dimensions:
2100mm (w) x 1800mm (drop) x 1550mm (extension)



FIAMMA AWNING PRIVACY SCREEN

CODE: SRPSF28 | LONG WALL
2.85M (L) X 1.80M (H) | SUITS 3.00M FIAMMA F45 AWNING

CODE: SRPSF33 | LONG WALL
3.35M (L) X 1.80M (H) | SUITS 3.50M FIAMMA F45 AWNING

CODE: SRPSF38 | LONG WALL
3.85M (L) X 1.80M (H) | SUITS 4.00M FIAMMA F45 AWNING

CODE: CAEPSF | END WALL
SPLINE: 4MM | SUITS FIAMMA F45 AWNING

CARAVAN FRIDGE VENT SCREEN

CODE: SRFS | 810MM (W) X 1830MM (H)
CODE: SRFSS | 810MM (W) X 1830MM (H)
SAIL TRACK INCL.

- Shades caravan fridge vents to assist performance
- Includes pegs and ropes



TIE DOWN KIT

CODE: CAM1

- Quickly and easily fasten privacy screens
- Provides tension
- For tarps, tents and more

Includes:
- 5 x bungee cords
- 5 x tent pegs



Tent Peg Dimensions: 6.3mm (dia.) x 225mm (h)

ENSUITE

TOILET CHEMICAL SACHETS	34
STIMEX TOILET CHEMICAL LIQUID	35
PORTABLE TOILET	36
TOILET CLEANERS	36



TOILET CHEMICAL SACHETS



PORTA PAK FRESH SCENT

CODE: WL1

- Odour prevention
- Biodegradable & formaldehyde free
- Pack of 15 sachets



PORTA PAK LAVENDAR BREEZE

CODE: WL2

- Odour prevention
- Biodegradable & formaldehyde free
- Pack of 15 sachets



BIO PAK ALPINE FRESH

CODE: WL3

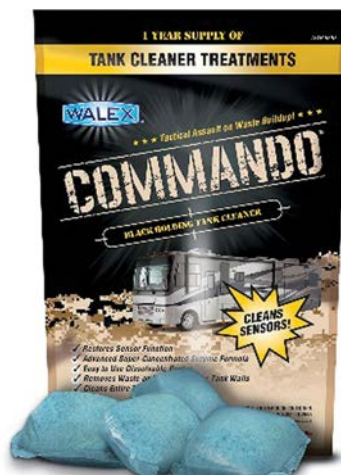
- Removes odours, safe for septic tank
- Biocide & formaldehyde free
- 100% biodegradable
- Pack of 15 sachets



BIO PAK TROPICAL BREEZE

CODE: WL4

- Removes odours, safe for septic tank
- Biocide & formaldehyde free
- Pack of 15 sachets



WALEX COMMANDO

CODE: WL5

- Lubricates valves & seals
- Septic tank safe, dissolvable packet
- Formaldehyde free & eco-friendly
- Pack of 4 sachets



WALEX ELEMONATE

CODE: WL6

- Cleans sensors inside grey tank
- Dissolves rapidly
- Biodegradable & formaldehyde free
- Pack of 5 sachets

STIMEX TOILET CHEMICAL LIQUID



CAMP BLUE, 2.5L

CODE: STCB

- High concentrate toilet liquid
- For use in the waste tank of all chemical toilets
- Volume: 2.5L



CAMP BLUE, 1L

CODE: STCB1L

- High concentrate toilet liquid
- For use in the waste tank of all chemical toilets
- Volume: 1L



CAMP FLUSH, 2.5L

CODE: STCF

- Pleasant smelling toilet break down liquid
- For use in the flush tank of all chemical toilets,
- Environmentally safe & biodegradable
- Volume: 2.5L



CAMP FLUSH, 1L

CODE: STCF1L

- Pleasant smelling toilet break down liquid
- For use in the flush tank of all chemical toilets
- Environmentally safe & biodegradable
- Volume: 1L



CAMP GREEN, 2.5L

CODE: STCG

- High concentrate toilet liquid
- For use in the waste tank of all chemical toilets
- Environmentally safe & biodegradable
- Volume: 2.5L



CAMP GREEN, 1L

CODE: STCG1L

- High concentrate toilet liquid
- For use in the waste tank of all chemical toilets
- Environmentally safe & biodegradable
- Volume: 1L

PORTABLE TOILET & CLEANERS



PORTABLE TOILET

CODE: PT15

- Pressure control valve and swivel spout for easy emptying
- Auto ventilation
- Single flush nozzle
- Capacity: 15L fresh, 17L waste
- Weight: 3.8kg

Dimensions:

446mm (d) x 380mm (w) x 367mm (h)



CAMP SOFT TOILET PAPER

CODE: STICS

- Rapidly dissolving toilet paper
- For all types of portable toilets
- Pack of 4 rolls



WATER TANK CLEANER

CODE: SWC

- Environmentally friendly concentrate for caravan pipes and water tanks
- Cleans limescale and deposits
- Contains 500mL



CASSETTE TANK CLEANER

CODE: SCTC

- High concentrate cleaning liquid
- For use in the waste tank of chemical and/or portable toilets
- Contains 500mL

A person in a dark jacket stands on a rocky outcrop, looking out over a valley. A stream flows over rocks in the foreground. The valley is filled with trees in autumn colors, ranging from green to golden yellow. The sky is bright and hazy. The text "FIND YOUR PATH" is overlaid in the center in a bold, dark green font.

***FIND
YOUR
PATH***

ELECTRICAL & 12V

RECHARGEABLES	40
ANODE	42
CARAVAN ELECTRICAL LEADS	43
LED LIGHTING	44



RECHARGEABLE CAMP ACCESSORIES

RECHARGEABLE OUTDOOR CAMPING FAN

CODE: CF01

- 270° fan with LED, night & SOS lights
 - 3 fan settings, 3 light settings
 - Run time: 5 - 12 hours
- Product Weight: 890g

Dimensions:
215mm (w) x 245mm (h) x 80mm (d)



RECHARGEABLE AIR PUMP

CODE: AP01

- Compact, portable & rechargeable
 - With hanging hook and LED light
 - Powerful air flow: 200-250L/m
- Product Weight: 162g

Dimensions:
50mm (w) x 89mm (h) x 55mm (d)



RECHARGEABLE CAMPING LIGHT

CODE: HL08

- Multipurpose light with 6 modes
 - Use closed, partly or fully opened
 - Can be used as a power bank
 - Includes hook and carry bag
- Product Weight: 420g / IPX5

Dimensions:
55mm (w) x 220mm (h) x 55mm (d)



***Explore
every
moment***



ANODES & ACCESSORIES



ANODE

CODE: AND1 | BULK
CODE: AND1P | HANG SELL PACK

- Magnesium caravan hot water service replacement anode

Dimensions: 21mm dia. x 300mm (l)



7 PIN FLAT PLUG

CODE: EAP7F

- Circuits engraved into outer casing
- Saddle device to secure wiring
- Seven pins rated at 15amps at 12V
- Suitable for 12V and 24V applications

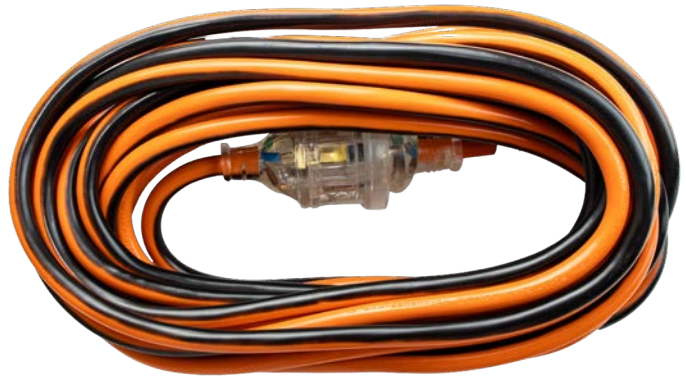


7 PIN FLAT SOCKET

CODE: EA7FFM

- Circuits engraved into outer casing
- Seven pins rated at 15amps at 12V
- Suitable for 12V and 24V applications

CARAVAN LEADS & ACCESSORIES



CARAVAN ELECTRICAL LEAD

CODE: EL10 | 10m length

CODE: EL15 | 15m length

CODE: EL20 | 20m length

- Heavy duty caravan extension lead, 15amp plug



HAIR DRYER

CODE: HDYR

- Convenient, compact hair dryer for travelling
- Hot and cool air options
- DC motor; 12V car use voltage, 50Hz, 192W
- Includes 1.5m PVC cord



HAIR STYLER

CODE: HRST

- Convenient hair styler for travelling
- Ceramic plate & PTC heater, heats rapidly to max. 200°
- LED light indicates ready for use
- 12V car use voltage

INTERIOR LED LIGHTING



OYSTER LIGHT

CODE: SRLED1

- 12V interior roof mount light
- Body colour: white
- Cool white light, 6W

Dimensions: 260mm dia.



ULTRA SLIM LIGHT

CODE: SRLED5 | 127MM DIA.
CODE: SRLED27 | 216MM DIA.

- Opal panel light with switch
- Body colour: white



READING LIGHT

CODE: SRLED2

- LED frosted glass swivel light

Dimensions:
106mm (h)



READING LIGHT

CODE: SRLED15B | 160MM (H)
CODE: SRLED15C | 139MM (H)

- 10-15V programmed reading light
- Crystal glass flexible light
- Dual colour - cool white, blue



BRIGHT BAR LIGHT

CODE: SRLED22 | 150MM (L) X 21MM (W) X 12MM (D)
CODE: SRLED23 | 300MM (L) X 21MM (W) X 12MM (D)
CODE: SRLED24 | 450MM (L) X 21MM (W) X 12MM (D)
CODE: SRLED25 | 600MM (L) X 21MM (W) X 12MM (D)

- 12V milky ultra bright internal LED bar light



SWIVEL RAIL LIGHT

CODE: SRLED19 | 156MM (L) X 27.5MM (W) X 24.5MM (D)
CODE: SRLED20 | 298MM (L) X 27.5MM (W) X 24.5MM (D)
CODE: SRLED21 | 460MM (L) X 27.5MM (W) X 24.5MM (D)

- 12V LED internal swivel rail light
- White polycarbonate shell

EXTERIOR LED LIGHTING



BARGMAN STYLE LAMP

CODE: SRLED6 | CHROME BASE
CODE: SRLED6B | BLACK BASE

- Polycarbonate ABS plastic housing
- 35 x LED lights



DUAL COLOUR READING LIGHT WITH USB PORT

CODE: SRLED28 | SILVER
CODE: SRLED29 | BLACK

- 10-15V flexible reading light with dual colour light (cool white / blue)
- USB charger for devices
- Includes installation screws and guide

Dimensions:
60mm (dia. base) x 165mm (h)



GRAB HANDLE LIGHT

CODE: SRLED30

- 12V flush mount handle light with on / off switch

Dimensions: 500mm (l)



AWNING LIGHT

CODE: SRLED8W | WHITE
CODE: SRLED8B | BLACK

- Available in black and white

Dimensions:
250mm (l) x 40.5mm (w) x 30mm (h)



AWNING LIGHT

CODE: SRLED9W | White
CODE: SRLED9B | Black

- Available in black and white

Dimensions:
550mm (l) x 40.5mm (w) x 30mm (h)

CRL360 SERIES: SLIMLINE COMBINATION REAR LAMPS



CODE: RL360DLEDB

- Single, STOP/TAIL
- 10 - 30V
- Black base

Dimensions:
400mm (l) x 46mm (d) x 15mm (h)



CODE: RL360DLEDC

- Single, INDICATOR
- 10V - 30V
- Chrome base

Dimensions:
400mm (l) x 46mm (d) x 15mm (h)



CODE: RL360SLEDB

- Single, INDICATOR
- 10V - 30V
- Black base

Dimensions:
400mm (l) x 46mm (d) x 15mm (h)



CODE: RL360SLEDC

- Single, STOP/TAIL
- 10 - 30V
- Chrome base

Dimensions:
400mm (l) x 46mm (d) x 15mm (h)



CODE: RL360RLEDB

- Single, REVERSE
- 10 - 30V
- Black base

Dimensions:
400mm (l) x 46mm (d) x 15mm (h)



CODE: RL360RLEDC

- Single, REVERSE
- 10 - 30V
- Chrome base

Dimensions:
400mm (l) x 46mm (d) x 15mm (h)



CODE: RL360SDLEDB

- Single, STOP/TAIL/INDICATOR
- 10 - 30V
- Black base

Dimensions:
400mm (l) x 46mm (d) x 15mm (h)



CODE: RL360SDLEDC

- Single, STOP/TAIL/INDICATOR
- 10 - 30V
- Chrome base

Dimensions:
400mm (l) x 46mm (d) x 15mm (h)



CODE: CRL360LEDB

- Combination, STOP/TAIL/INDICATOR
- 10 - 30V
- Black base

Dimensions:
400mm (l) x 82mm (d) x 15mm (h)



CODE: CRL360LEDC

- Combination, STOP/TAIL/INDICATOR
- 10 - 30V
- Chrome base

Dimensions:
400mm (l) x 82mm (d) x 15mm (h)



CODE: CRL360RLEDB

- Combination, STOP/TAIL/IND./REV.
- 10 - 30V
- Black base

Dimensions:
400mm (l) x 82mm (d) x 15mm (h)



CODE: CRL360RLEDC

- Combination, STOP/TAIL/IND./REV.
- 10 - 30V
- Chrome base

Dimensions:
400mm (l) x 82mm (d) x 15mm (h)

CRL260 SERIES: SLIMLINE COMBINATION LAMPS



CODE: RL260DLEDB

- Single, INDICATOR
- 10 - 30V
- Black base

Dimensions:
259mm (l) x 46mm (d) x 15 mm (h)



CODE: RL260SLEDB

- Single, STOP/TAIL
- 10 - 30V
- Black base

Dimensions:
259mm (l) x 46mm (d) x 15 mm (h)



CODE: RL260RLEDB

- Single, REVERSE
- 10 - 30V
- Black base

Dimensions:
259mm (l) x 46mm (d) x 15 mm (h)



CODE: RL260SDLEDB

- Single, STOP/TAIL/INDICATOR
- 10 - 30V
- Black base

Dimensions:
259mm (l) x 46mm (d) x 15 mm (h)



CODE: CRL260RLEDB

- Combination, STOP/TAIL/INDICATOR /REVERSE
- 10 - 30V
- Black base

Dimensions:
259mm (l) x 82mm (d) x 15 mm (h)



CODE: CRL260LEDB

- Combination, STOP/TAIL/INDICATOR
- 10 - 30V
- Black base

Dimensions:
259mm (l) x 82mm (d) x 15 mm (h)

CRL350 SERIES: COMBINATION REAR LAMPS



CODE: CRL350LEDB

- STOP/TAIL/INDICATOR
- Black base

Dimensions:
445mm (l) x 155mm (d) x 40 mm (h)



CODE: CRL350LEDC

- STOP/TAIL/INDICATOR
- Chrome base

Dimensions:
445mm (l) x 155mm (d) x 40 mm (h)



CODE: CRL350CLEDB

- STOP/TAIL/INDICATOR
- Clear lens, black base

Dimensions:
445mm (l) x 155mm (d) x 40 mm (h)



CODE: CRL350CLEDC

- STOP/TAIL/INDICATOR
- Clear lens, chrome base

Dimensions:
445mm (l) x 155mm (d) x 40 mm (h)



CODE: CRL350RLEDB

- Combination, STOP/TAIL/INDICATOR/REVERSE
- Black base

Dimensions:
445mm (l) x 155mm (d) x 40 mm (h)



CODE: CRL350RLEDC

- Combination, STOP/TAIL/INDICATOR/REVERSE
- Chrome base

Dimensions:
445mm (l) x 155mm (d) x 40 mm (h)



CODE: CRL350RCLEDB

- STOP/TAIL/INDICATOR/REVERSE
- Clear lens, black base

Dimensions:
445mm (l) x 155mm (d) x 40 mm (h)



CODE: CRL350RCLEDC

- STOP/TAIL/INDICATOR/REVERSE
- Clear lens, chrome base

Dimensions:
445mm (l) x 155mm (d) x 40 mm (h)

MARKER LAMPS



SM8 FRONT MARKER LAMP

CODE: FM8CLED

- Clear LED front clearance lamp with reflectors

Dimensions:
90mm (l) x 50mm (d) x 22mm (h)



SM8 REAR MARKER LAMP

CODE: RM8CLED

- Red LED rear marker lamp with reflectors

Dimensions:
90mm (l) x 50mm (d) x 22mm (h)



SM8 SIDE MARKER LAMP

CODE: SM8ALED

- Amber LED side marker lamp with reflectors

Dimensions:
90mm (l) x 50mm (d) x 22mm (h)



SM13 AMBER MARKER LAMP

CODE: SM13ALED

- Amber 'retrofit' LED marker
- Includes 0.5m cable

Dimensions:
120mm (l) x 64mm (d) x 32mm (h)



SM13 RED/AMBER MARKER LAMP

CODE: SM13RALED

- Red/amber 'retrofit' LED side marker
- Includes 0.5m cable

Dimensions:
120mm (l) x 64mm (d) x 32mm (h)



SM62 FRONT MARKER LAMP

CODE: FM62CLED

- Clear LED front clearance marker
- 9 - 33V
- Includes 0.5m cable

Dimensions:
57mm (l) x 35mm (d) x 21mm (h)



SM62 RED/AMBER SIDE MARKER LAMP

CODE: SM62RALED

- Red/amber side marker
- 9 - 33V
- Includes 0.5m cable

Dimensions:
57mm (l) x 35mm (d) x 21mm (h)



RM62 RED REAR MARKER LAMP

CODE: RM62RLED

- Red rear marker
- 9 - 33V
- Includes 0.5m cable

Dimensions:
57mm (l) x 35mm (d) x 21mm (h)



SM62 AMBER SIDE MARKER LAMP

CODE: SM62ALED

- Amber side marker
- 9 - 33V
- Includes 0.5m cable

Dimensions:
57mm (l) x 35mm (d) x 21mm (h)

RV & TRAILER HARDWARE

JOCKEY WHEELS	52
JOCKEY WHEEL ACCESSORIES	54
ADJUSTABLE STANDS & CARAVAN LEGS	56
ADJUSTABLE LEGS & ACCESSORIES	57
TRAILER ACCESSORIES	59
JERRY CAN HOLDERS	60
GAS BOTTLE HOLDERS	61



JOCKEY WHEELS



ECONOMY JOCKEY WHEEL

CODE: JW1E

- Solid rubber wheel with nylon web bore
- Includes clamp
- Unit Weight: 5.2kg
- Static Load Capacity: 500kg

Dimensions:
Wheel - 150mm x 50mm (6" x 2")
Lift - 225mm



EXTRA HEIGHT JOCKEY WHEEL

CODE: JW1EH

- Solid rubber wheel with nylon web bore
- Includes clamp
- Unit Weight: 6.2kg
- Static Load Capacity: 500kg

Dimensions:
Wheel - 150mm x 50mm (6" x 2")
Lift - 225mm



ECONOMY SWIVEL JOCKEY WHEEL

CODE: JW2E

- Solid rubber wheel with nylon web bore
- With pin locking swivel bracket welded in position
- Unit Weight: 6.0kg
- Static Load Capacity: 350kg

Dimensions:
Wheel - 150mm x 50mm (6" x 2")
Lift - 225mm



ECONOMY SWIVEL JOCKEY WHEEL

CODE: JW2UBE

- Solid rubber wheel with nylon web bore
- With pin locking swivel bracket welded in position
- For fixing with U-Bolts (suits 2", 3", 4", 5" & 6" U-Bolts)
- Unit Weight: 6.2kg
- Static Load Capacity: 350kg

Dimensions:
Wheel - 150mm x 50mm (6" x 2")
Lift - 225mm



MEDIUM JOCKEY WHEEL

CODE: JW4Z

- Rubber tyre with zinc plated steel centre and roller bearings
- Includes clamp
- Unit Weight: 6.6kg
- Static Load Capacity: 750kg

Dimensions:
Wheel - 200mm x 55mm (8" x 2")
Lift - 225mm



EXTRA HEIGHT JOCKEY WHEEL

CODE: JW4ZEH

- Rubber tyre with zinc plated steel centre and roller bearings
- Includes clamp
- Unit Weight: 8.5kg
- Static Load Capacity: 700kg

Dimensions:
Wheel - 200mm x 55mm (8" x 2")
Lift - 225mm

JOCKEY WHEELS



MEDIUM SWIVEL JOCKEY WHEEL

CODE: JW4ZUB

- Rubber tyre with zinc plated steel centre and roller bearings
- With pin locking swivel bracket welded in position
- For fixing with U-Bolts (suits 2", 3", 4", 5" & 6" U-Bolts)
- Unit Weight: 9.6kg
- Static Load Capacity: 750kg

Dimensions:
Wheel - 200mm x 55mm (8" x 2")
Lift - 225mm

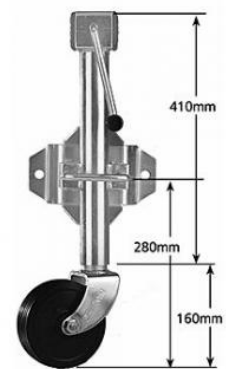


EXTRA HEIGHT JOCKEY WHEEL

CODE: JW9EHD

- Solid cushion tyre with steel centre and bronze bush bore
- 'Pneumatic Look' solid rubber
- Increased capacity; includes H/D clamp
- Unit Weight: 12.2kg
- Static Load Capacity: 850kg

Dimensions:
Wheel - 4.10 / 3.50 x 4 (10")
Lift - 225mm



STANDARD SWIVEL JOCKEY WHEEL

CODE: JWSW-2

- Solid rubber with nylon web bore
- Side winding with pin locking swivel bracket welded in position
- Unit Weight: 7.5kg
- Static Load Capacity: 500kg

Dimensions:
Wheel - 150mm x 50mm (6" x 2")
Lift - 225mm

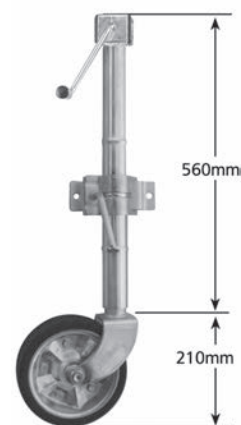


SWIVEL JOCKEY WHEEL

CODE: JW10S

- Solid cushion tyre with steel centre and bronze bush bore
- 'Pneumatic Look' solid rubber
- With pin locking swivel bracket welded in position
- Unit Weight: 11.1kg
- Static Load Capacity: 850kg

Dimensions:
Wheel - 4.10 / 3.50 x 4 (10")
Lift - 225mm



EXTRA HEIGHT JOCKEY WHEEL

CODE: JWSW-4ZEH

- Rubber tyre with zinc plated steel centre and roller bearings
- Side winding; includes clamp
- Unit Weight: 8.6kg
- Static Load Capacity: 700kg

Dimensions:
Wheel - 200mm x 55mm (8" x 2")
Lift - 225mm

JOCKEY WHEEL ACCESSORIES



LARGE JOCKEY WHEEL HOLDER

CODE: SRWJCH

- Can be pegged to the ground
- Made from black plastic

Dimensions:
204mm (dia.) x 35mm (h)



RUBBER WHEEL HOLDER

CODE: RWH

- Support cradle for use under 200mm and 250mm jockey wheels
- Unit Weight: 0.55kg

Dimensions:
170mm (l) x 130mm (w) x 40mm (h)



LARGE RUBBER WHEEL HOLDER

CODE: RWHL

- Large support cradle for use under 200mm and 250mm jockey wheels

Dimensions:
200mm (l) x 130mm (w) x 50mm (h)

RUBBER TYRE

CODE: RT

- Zinc steel centre finish
- 16mm roller bearing

Dimensions:
200mm dia.



SOLID RUBBER WHEEL

CODE: JWSRW

- Suits standard jockey wheel
- Unit Weight: 0.97kg

Dimensions:
150mm (dia.) with 13mm nylon web bore



HANDLE

CODE: JWHRP

- Suits most standard jockey wheels
- Unit Weight: 0.24kg



CLAMP

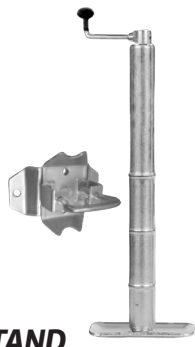
CODE: JWCL1

- Clamp for jockey wheel
- Suits up to 50mm dia. shank



A LIFETIME OF ADVENTURE

ADJUSTABLE STANDS & CARAVAN LEGS



STANDARD ADJUSTABLE STAND

CODE: AS20LB

- With pin locking swivel bracket
- Bracket supplied loose
- Lift: 225mm
- Unit Weight: 6.7kg
- Static Load Capacity: 650kg



MEDIUM DUTY ADJUSTABLE STAND

CODE: ASSW1.4M

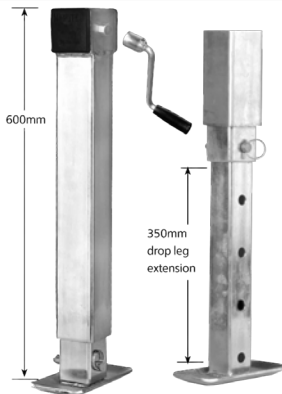
- Side winding with loose handle
- Lift: 350mm
- Unit Weight: 15.5kg
- Static load capacity: 1000kg



HEAVY DUTY ADJUSTABLE STAND

CODE: ASSW-DL

- Side winding with drop leg
- Lift: 350mm
- Unit Weight: 11.8kg
- Static Load Capacity: 1500kg



HEAVY DUTY ADJUSTABLE STAND

CODE: ASSW-DLLH | WITH LOOSE HANDLE

- As ASSW-DL, with loose handle



FRONT ADJUSTABLE LEG

CODE: ALFP6

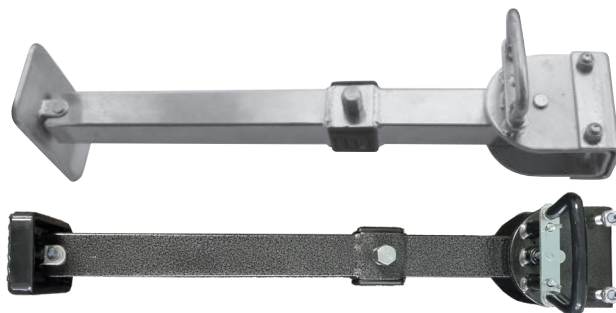
- Weld on
- Front; no wheel
- Power thread, slotted type handle fitment
- Unit Weight: 3.6kg
- Length: 600mm



REAR ADJUSTABLE LEG

CODE: ALRP5

- Weld on
- Rear with wheel
- Power thread, slotted type handle fitment
- Unit Weight: 3.5kg
- Length: 500mm



EXTRA LARGE ADJUSTABLE LEG, STEEL FOOT

CODE: ALQR4LP | ZINC PLATED FINISH
CODE: ALQR4LP-HT | HAMMERTONE FINISH

- Weld on
- Unit Weight: 6.2kg
- Height: 620mm
- Lift: 180mm

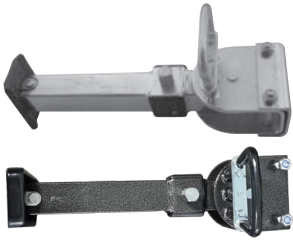


MOUNTING TUBES

CODE: AS-MT

- Swivel for adjustable stands
- Unit Weight: 0.9kg
- Static Load Capacity: 1000kg

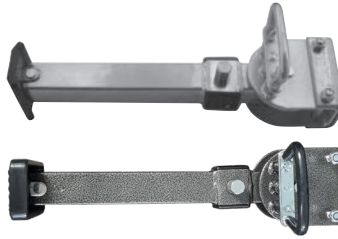
ADJUSTABLE LEGS & ACCESSORIES



SMALL ADJUSTABLE LEG WITH PLASTIC FOOT

CODE: ALQR1 | ZINC PLATED FINISH
CODE: ALQR1-HT | H/TONE FINISH

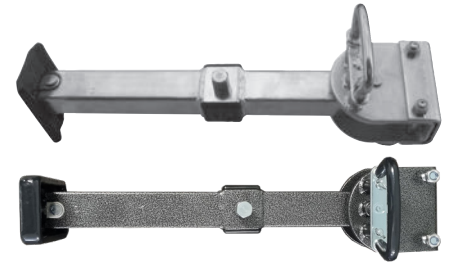
- Weld on
- Unit Weight: 4.7kg
- Height: 400mm / Lift: 120mm



MEDIUM ADJUSTABLE LEG WITH PLASTIC FOOT

CODE: ALQR2 | ZINC PLATED FINISH
CODE: ALQR2-HT | H/TONE FINISH

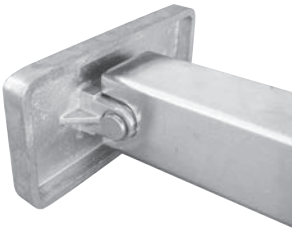
- Weld on
- Unit Weight: 5.1kg
- Height: 460mm / Lift: 180mm



LARGE ADJUSTABLE LEG WITH PLASTIC FOOT

CODE: ALQR3 | ZINC PLATED FINISH
CODE: ALQR3-HT | H/TONE FINISH

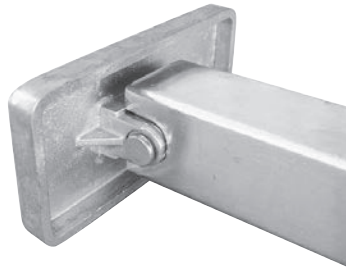
- Weld on
- Unit Weight: 5.7kg
- Height: 520mm / Lift: 140mm



SMALL ADJUSTABLE LEG WITH ALUMINIUM FOOT

CODE: ALQR1-AF

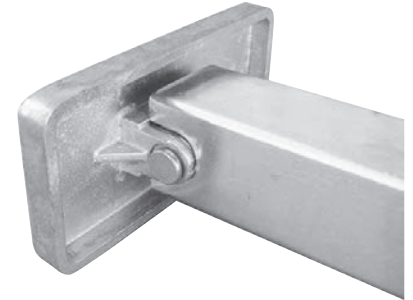
- Unit Weight: 4.7kg
- Height: 400mm
- Lift: 120mm



MEDIUM ADJUSTABLE LEG WITH ALUMINIUM FOOT

CODE: ALQR2-AF

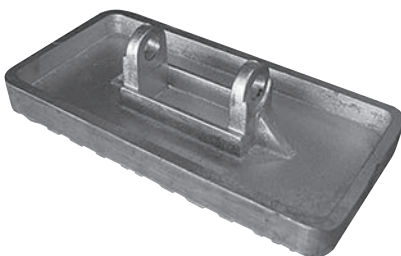
- Unit Weight: 5.1kg
- Height: 460mm
- Lift: 180mm



LARGE ADJUSTABLE LEG WITH ALUMINIUM FOOT

CODE: ALQR3-AF

- Unit Weight: 5.7kg
- Height: 520mm
- Lift: 140mm



ALUMINIUM FOOT

CODE: ALQRF

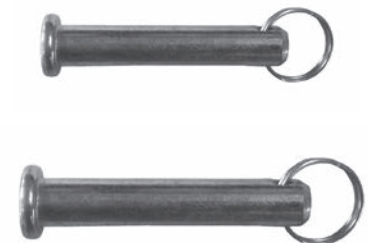
- Suits ALQR leg



PLASTIC FOOT

CODE: ALQRPF

- Suits ALQR leg



PIN FOR REPLACEMENT FOOT

CODE: ALQRPS | SMALL
CODE: ALQRPL | LARGE

- Small, to suit plastic covered feet
- Large, to suit aluminium feet

ADJUSTABLE LEGS & ACCESSORIES



P SERIES HANDLE

CODE: LH2P | SLOTTED TYPE | 700MM (L) | WEIGHT: 680G
CODE: LH2PD | SLOTTED TYPE, DRILL STYLE | 570MM (L) | WEIGHT: 500G



HEX HEAD HANDLE

CODE: LH2M | HEX HEAD TYPE | 700MM (L) | WEIGHT: 840G
CODE: LH2MD | HEX HEAD TYPE, DRILL STYLE | 590MM (L) | WEIGHT: 600G



CARAVAN JACK PAD

CODE: SRWJ

- Four piece set

Dimensions:
180mm (d) x 140mm (w) x 50mm (h)



JACK PAD STACKER

CODE: SRWJP

- Four piece set

Dimensions:
145mm (d) x 145mm (w) x 40mm (h)

TRAILER ACCESSORIES



D-SHACKLES

CODE: DS1 | SMALL
 CODE: DS2 | MEDIUM
 CODE: DS3 | LARGE

DS1
 - 1000kg WLL rated; ADR Approved; 10mm

DS2
 - 1500kg WLL rated; ADR Approved; 11mm

DS3
 - 2000kg WLL rated; ADR Approved; 13mm



BOW SHACKLES

CODE: BSH1 | SMALL
 CODE: BSH2 | MEDIUM
 CODE: BSH3 | LARGE

BSH1
 - 1000kg WLL rated; ADR Approved; 10mm

BSH2
 - 1500kg WLL rated; ADR Approved; 11mm

BSH3
 - 2000kg WLL rated; ADR Approved; 13mm



A TYPE BEARING SET

CODE: MLMAJ

- Japanese; similar to Holden
 - Includes small and large bearing and A-type seal



B TYPE BEARING SET

CODE: MLMBJ

- Japanese slimline or heavy duty bearings, similar to Ford car bearings
 - Includes small and large bearing and B-type seal



TWIN COUPLING LOCK

CODE: TCL

- Twin coupling lock complete with 38mm brass padlock
 - Unit weight: 1.86kg

JERRY CAN HOLDERS

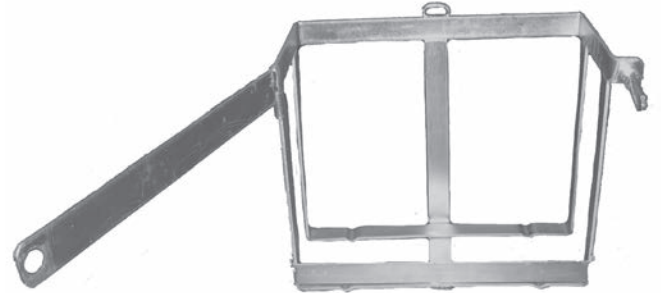


JERRY CAN HOLDER

CODE: JCHD

- Zinc plated finish
- Weld on style / metal strap
- Unit Weight: 3.0kg

Inside Dimensions:
180mm (d) x 370mm (w) x 295mm (h)



JERRY CAN HOLDER, FRONT OPENING

CODE: JCHDO

- Zinc plated finish
- Weld on style / metal strap
- Unit Weight: 3.4kg

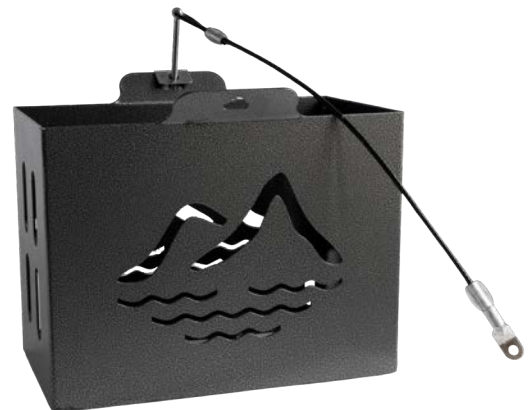
Inside Dimensions:
180mm (d) x 370mm (w) x 295mm (h)



JERRY CAN HOLDER, HAMMERTONE FINISH WITH SIDE FLANGES

CODE: JCHD-SF

- Hammertone finish
- Bolt on style / with side flanges
- Unit Weight: 6.0kg

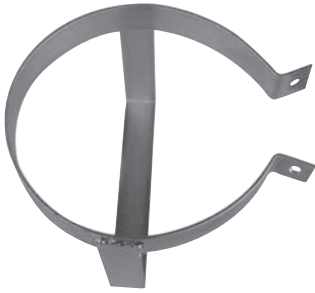


JERRY CAN HOLDER, HAMMERTONE FINISH WITHOUT SIDE FLANGES

CODE: JCHD-NSF

- Hammertone finish
- Bolt on style / no side flanges
- Unit Weight: 6.0kg

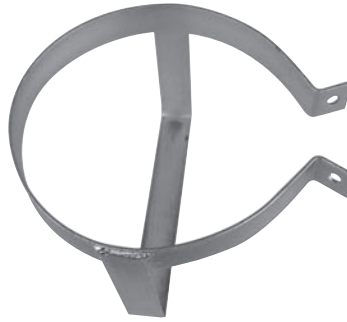
GAS BOTTLE HOLDERS



SMALL GAS BOTTLE HOLDER

CODE: GBHDS

- To suit 4.0kg - 4.5kg gas bottle
- Zinc plated finish, weld on style
- Unit Weight: 1.4kg



MEDIUM GAS BOTTLE HOLDER

CODE: GBHDM

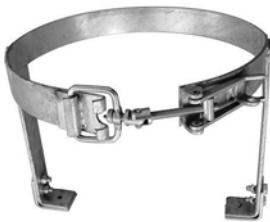
- To suit 5.0kg 'squat' gas bottle
- Zinc plated finish, weld on style
- Unit Weight: 1.47kg



LARGE GAS BOTTLE HOLDER

CODE: GBHDL

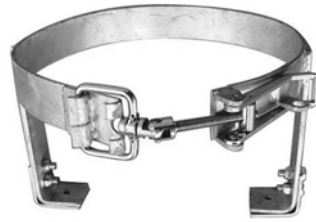
- To suit 9.0kg gas bottle
- Zinc plated finish, weld on style
- Unit Weight: 1.6kg



SMALL ADJUSTABLE GAS BOTTLE HOLDER

CODE: AGBHS

- Zinc plated, to suit 4.0kg gas bottle
- Mount brackets for weld on
- Galvanised holder bolted to brackets for easy replacement
- Fully adjustable and lockable
- Unit Weight: 1.86kg



LARGE ADJUSTABLE GAS BOTTLE HOLDER

CODE: AGBHL

- Zinc plated, to suit 9.0kg gas bottle
- Mount brackets for weld on
- Galvanised holder bolted to brackets for easy replacement
- Fully adjustable and lockable
- Unit Weight: 2.36kg



RUBBER RING

CODE: AGBHS-RR | SMALL
CODE: AGBHL-RR | LARGE

- Place around metal ring of holder to prevent chafing and wear & tear
- 100% rubber ring, black

Note: Gas Bottle Holder not included



SMALL ADJUSTABLE GAS BOTTLE HOLDER, FRONT OPENING

CODE: AGBHSO

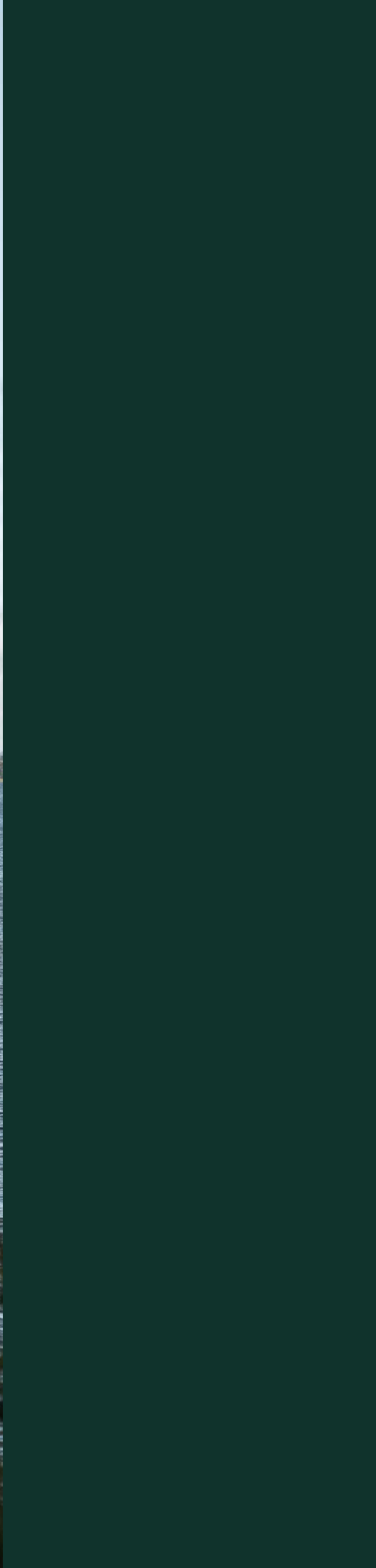
- Suits 4.0kg gas bottle
- Weld on style
- Unit Weight: 1.86kg



LARGE ADJUSTABLE GAS BOTTLE HOLDER, FRONT OPENING

CODE: AGBHLO

- Suits 9.0kg gas bottle
- Weld on style
- Unit Weight: 2.0kg



CAMP & OUTDOORS

TENT POLES & SPREADER BARS	64
ROPES & PEGS	78
BEDDING	88
FURNITURE	92
COOKWARE	102
BEACH & SHELTERS	114
CAMPSITE ACCESSORIES	120
MAINTENANCE & REPAIR	124

TENT POLES & SPREADER BARS

TENT POLES	66
SPREADER BARS	69
ROOF RAILS	71
ALUMINIUM TENT POLES	72
ALUMINIUM SPREADER BARS	73
TENT POLE ACCESSORIES	74



TENT POLES



TENT POLE - T NUT - IMPORTED

CODE: 564CI | 19-22MM DIA. X 0.9WT - MAX. 183CM (6') | COLLAPSED LENGTH: ~113CM
CODE: 564DI | 19-22MM DIA. X 0.9WT - MAX. 228CM (7'6") | COLLAPSED LENGTH: ~129CM
CODE: 564EI | 19-22MM DIA. X 0.9WT - MAX. 274CM (9') | COLLAPSED LENGTH: ~149CM



EXTENSION POLE - T NUT

CODE: 564C | 19-22MM DIA. X 0.9WT - MAX. 183CM (6') | COLLAPSED LENGTH: ~110CM
CODE: 564D | 19-22MM DIA. X 0.9WT - MAX. 228CM (7'6") | COLLAPSED LENGTH: ~122CM
CODE: 564B | 19-22MM DIA. X 0.9WT - MAX. 243CM (8') | COLLAPSED LENGTH: ~133CM
CODE: 564E | 19-22MM DIA. X 0.9WT - MAX. 274CM (9') | COLLAPSED LENGTH: ~146CM
CODE: 564F | 19-22MM DIA. X 0.9WT - MAX. 305CM (10') | COLLAPSED LENGTH: ~169CM



EXTENSION SUPPORT POLE - T NUT - CLIP 1 END

CODE: 564DC | 19-22MM DIA. X 0.9WT - MAX. 228CM (7'6") - CLIP END | COLLAPSED LENGTH: ~125CM
CODE: 564BC | 19-22MM DIA. X 0.9WT - MAX. 243CM (8') - CLIP END | COLLAPSED LENGTH: ~136CM
CODE: 564EC | 19-22MM DIA. X 0.9WT - MAX. 274CM (9') - CLIP END | COLLAPSED LENGTH: ~149CM
CODE: 564FC | 19-22MM DIA. X 0.9WT - MAX. 305CM (10') - CLIP END | COLLAPSED LENGTH: ~166CM

TENT POLES



EXTENSION SUPPORT POLE - T NUT - SQUARE C CLIP

CODE: 564DSQC | 19-22MM DIA. X 0.9WT - MAX. 228CM (7'6") - SQUARE CLIP END | COLLAPSED LENGTH: ~125CM
CODE: 564BSQC | 19-22MM DIA. X 0.9WT - MAX. 243CM (8') - SQUARE CLIP END | COLLAPSED LENGTH: ~136CM
CODE: 564ESQC | 19-22MM DIA. X 0.9WT - MAX. 274CM (9') - SQUARE CLIP END | COLLAPSED LENGTH: ~149CM
CODE: 564FSQC | 19-22MM DIA. X 0.9WT - MAX. 305CM (10') - SQUARE CLIP END | COLLAPSED LENGTH: ~166CM



THREE PIECE EXTENSION POLE

CODE: 564H | 19-22-25MM DIA. X 0.9WT - MAX. 243CM (8') | COLLAPSED LENGTH: ~96CM
CODE: 564I | 19-22-25MM DIA. X 0.9WT - MAX. 305CM (10') | COLLAPSED LENGTH: ~116CM
CODE: 564G | 19-22-25MM DIA. X 0.9WT - MAX. 366CM (12') | COLLAPSED LENGTH: ~138CM



EXTENSION - T NUT - THREADED SPIGOT

CODE: 564CT | 19-22MM DIA. X 0.9WT - MAX. 183CM (6') - THREADED SPIGOT | COLLAPSED LENGTH: ~110CM
CODE: 564DT | 19-22MM DIA. X 0.9WT - MAX. 228CM (7'6") - THREADED SPIGOT | COLLAPSED LENGTH: ~126CM
CODE: 564BT | 19-22MM DIA. X 0.9WT - MAX. 243CM (8') - THREADED SPIGOT | COLLAPSED LENGTH: ~133CM
CODE: 564ET | 19-22MM DIA. X 0.9WT - MAX. 274CM (9') - THREADED SPIGOT | COLLAPSED LENGTH: ~146CM
CODE: 564FT | 19-22MM DIA. X 0.9WT - MAX. 305CM (10') - THREADED SPIGOT | COLLAPSED LENGTH: ~169CM



SWAG POLE

CODE: 564A | 16-19MM DIA. X 0.9WT - MAX. 122CM (4') | COLLAPSED LENGTH: ~74CM

TENT POLES

MADE IN AUSTRALIA



EXTENSION POLE - T NUT - HEAVY DUTY

CODE: 464D | 19-22MM DIA. X 1.2WT – MAX. 228CM (7'6") | COLLAPSED LENGTH: ~126CM
CODE: 464E | 19-22MM DIA. X 1.2WT – MAX. 274CM (9') | COLLAPSED LENGTH: ~146CM
CODE: 364D | 22-25MM DIA. X 1.2WT – MAX. 228CM (7'6") | COLLAPSED LENGTH: ~126CM
CODE: 364E | 22-25MM DIA. X 1.2WT – MAX. 274CM (9') | COLLAPSED LENGTH: ~146CM

MADE IN AUSTRALIA



EXTENSION POLE - WELDED SPIGOT

CODE: 564CWS | 19-22MM DIA. X 0.9WT – MAX. 183CM (6') - SOLID WELDED METAL SPIGOT | COLLAPSED LENGTH: ~113CM
CODE: 564DWS | 19-22MM DIA. X 0.9WT – MAX. 228CM (7'6") - SOLID WELDED METAL SPIGOT | COLLAPSED LENGTH: ~129CM
CODE: 564BWS | 19-22MM DIA. X 0.9WT – MAX. 243CM (8') - SOLID WELDED METAL SPIGOT | COLLAPSED LENGTH: ~136CM
CODE: 564EWS | 19-22MM DIA. X 0.9WT – MAX. 274CM (9') - SOLID WELDED METAL SPIGOT | COLLAPSED LENGTH: ~149CM
CODE: 564FWS | 19-22MM DIA. X 0.9WT – MAX. 305CM (10') - SOLID WELDED METAL SPIGOT | COLLAPSED LENGTH: ~172CM

MADE IN AUSTRALIA



TWO PIECE MARQUEE POLE, STEEL

CODE: 264U | 22MM DIA. X 0.9WT – MAX. 183CM (6')
CODE: 264V | 22MM DIA. X 0.9WT – MAX. 214CM (7')
CODE: 264W | 22MM DIA. X 0.9WT – MAX. 243CM (8')

SPREADER BARS



SPREADER BARS - T NUT - EYE BOTH ENDS

CODE: 564K | 19-22MM DIA. X 0.9WT - MAX. 122CM (4') - 2 PIECE | COLLAPSED LENGTH: ~73CM
CODE: 564L | 19-22MM DIA. X 0.9WT - MAX. 152CM (5') - 2 PIECE | COLLAPSED LENGTH: ~88CM
CODE: 564M | 19-22MM DIA. X 0.9WT - MAX. 183CM (6') - 2 PIECE | COLLAPSED LENGTH: ~103CM
CODE: 564N | 19-22MM DIA. X 0.9WT - MAX. 213CM (7') - 2 PIECE | COLLAPSED LENGTH: ~126CM
CODE: 564O | 19-22MM DIA. X 0.9WT - MAX. 243CM (8') - 2 PIECE | COLLAPSED LENGTH: ~137CM
CODE: 564P | 19-22MM DIA. X 0.9WT - MAX. 274CM (9') - 2 PIECE | COLLAPSED LENGTH: ~150CM
CODE: 564Q | 19-22MM DIA. X 0.9WT - MAX. 305CM (10') - 2 PIECE | COLLAPSED LENGTH: ~167CM
CODE: 564S | 22-25MM DIA. X 1.2WT - MAX. 365CM (12') - 3 PIECE | COLLAPSED LENGTH: ~130CM
CODE: 564X | 22-25MM DIA. X 1.2WT - MAX. 427CM (14') - 3 PIECE | COLLAPSED LENGTH: ~152CM
CODE: 564Y | 22-25MM DIA. X 1.2WT - MAX. 488CM (16') - 4 PIECE | COLLAPSED LENGTH: ~133CM
CODE: 564Z | 22-25MM DIA. X 1.2WT - MAX. 548CM (18') - 4 PIECE | COLLAPSED LENGTH: ~148CM



SPREADER BARS - T NUT - CLIP 1 END

CODE: 564KC | 19-22MM DIA. X 0.9WT - MAX. 122CM (4') - 2 PIECE, CLIP END | COLLAPSED LENGTH: ~76CM
CODE: 564LC | 19-22MM DIA. X 0.9WT - MAX. 152CM (5') - 2 PIECE, CLIP END | COLLAPSED LENGTH: ~91CM
CODE: 564MC | 19-22MM DIA. X 0.9WT - MAX. 183CM (6') - 2 PIECE, CLIP END | COLLAPSED LENGTH: ~106CM
CODE: 564NC | 19-22MM DIA. X 0.9WT - MAX. 213CM (7') - 2 PIECE, CLIP END | COLLAPSED LENGTH: ~129CM
CODE: 564OC | 19-22MM DIA. X 0.9WT - MAX. 243CM (8') - 2 PIECE, CLIP END | COLLAPSED LENGTH: ~140CM
CODE: 564PC | 19-22MM DIA. X 0.9WT - MAX. 274CM (9') - 2 PIECE, CLIP END | COLLAPSED LENGTH: ~153CM



TENT POLE BAG

CODE: LPB

- Canvas bag to suit tent poles

Dimensions:
1.65m (l) x 80mm (w) x 160mm (h)

SPREADER BARS



SPREADER BARS - T NUT - CLIP 2 ENDS

CODE: 564KC2 | 19-22MM DIA. X 0.9WT – MAX. 122CM (4') - 2 PIECE, CLIP 2 ENDS | COLLAPSED LENGTH: ~74CM
CODE: 564LC2 | 19-22MM DIA. X 0.9WT – MAX. 152CM (5') - 2 PIECE, CLIP 2 ENDS | COLLAPSED LENGTH: ~89CM
CODE: 564MC2 | 19-22MM DIA. X 0.9WT – MAX. 183CM (6') - 2 PIECE, CLIP 2 ENDS | COLLAPSED LENGTH: ~104CM
CODE: 564NC2 | 19-22MM DIA. X 0.9WT – MAX. 213CM (7') - 2 PIECE, CLIP 2 ENDS | COLLAPSED LENGTH: ~127CM
CODE: 564OC2 | 19-22MM DIA. X 0.9WT – MAX. 243CM (8') - 2 PIECE, CLIP 2 ENDS | COLLAPSED LENGTH: ~138CM
CODE: 564PC2 | 19-22MM DIA. X 0.9WT – MAX. 274CM (9') - 2 PIECE, CLIP 2 ENDS | COLLAPSED LENGTH: ~151CM



HEAVY DUTY SQUARE SPREADER BARS

CODE: SR12 | 22-25MM – MAX. 365CM (12') - 3 PIECE | COLLAPSED LENGTH: ~133CM
CODE: SR15 | 22-25MM – MAX. 457CM (15') - 3 PIECE | COLLAPSED LENGTH: ~163CM
CODE: SR18 | 22-25MM – MAX. 548CM (18') - 4 PIECE | COLLAPSED LENGTH: ~155CM
CODE: SR20 | 22-25MM – MAX. 608CM (20') - 4 PIECE | COLLAPSED LENGTH: ~163CM
CODE: SR24 | 22-25MM – MAX. 730CM (24') - 5 PIECE | COLLAPSED LENGTH: ~163CM
CODE: SR30 | 22-25MM – MAX. 912CM (30') - 6 PIECE | COLLAPSED LENGTH: ~163CM
CODE: SR36 | 22-25MM – MAX. 1096CM (36') - 8 PIECE | COLLAPSED LENGTH: ~155CM

ROOF RAILS



ROOF RAILS - T NUT (INCLUDING BRACKET)

CODE: 564T | 19-22MM DIA. X 0.9WT – MAX. 243CM (8') - EYE END | COLLAPSED LENGTH: ~137CM
CODE: 564V | 19-22MM DIA. X 0.9WT – MAX. 274CM (9') - EYE END | COLLAPSED LENGTH: ~150CM
CODE: 564W | 19-22MM DIA. X 0.9WT – MAX. 305CM (10') - EYE END | COLLAPSED LENGTH: ~167CM



ROOF RAILS - T NUT (INCLUDING BRACKET) - CLIP END

CODE: 564TC | 19-22MM DIA. X 0.9WT – MAX. 243CM (8') - CLIP END | COLLAPSED LENGTH: ~140CM
CODE: 564VC | 19-22MM DIA. X 0.9WT – MAX. 274CM (9') - CLIP END | COLLAPSED LENGTH: ~153CM
CODE: 564WC | 19-22MM DIA. X 0.9WT – MAX. 305CM (10') - CLIP END | COLLAPSED LENGTH: ~170CM



ROOF RAILS - T NUT (INCLUDING BRACKET) - SPIGOT END

CODE: 564TS | 19-22MM DIA. X 0.9WT – MAX. 243CM (8') - SPIGOT END | COLLAPSED LENGTH: ~143CM
CODE: 564VS | 19-22MM DIA. X 0.9WT – MAX. 274CM (9') - SPIGOT END | COLLAPSED LENGTH: ~156CM
CODE: 564WS | 19-22MM DIA. X 0.9WT – MAX. 305CM (10') - SPIGOT END | COLLAPSED LENGTH: ~173CM

ALUMINIUM TENT POLES



ALUMINIUM TENT POLES - TWIST LOCK

CODE: 264S | 22-25MM DIA. X 1.2WT – MAX. 228CM (7'6") - MILL FINISH | COLLAPSED LENGTH: ~131CM
CODE: 264SW | 22-25MM DIA. X 1.2WT – MAX. 228CM (7'6") - WHITE FINISH | COLLAPSED LENGTH: ~131CM
CODE: 264SB | 22-25MM DIA. X 1.2WT – MAX. 228CM (7'6") - BLACK FINISH | COLLAPSED LENGTH: ~131CM
CODE: 264T | 22-25MM DIA. X 1.2WT – MAX. 274CM (9') - MILL FINISH | COLLAPSED LENGTH: ~155CM
CODE: 264TW | 22-25MM DIA. X 1.2WT – MAX. 274CM (9') - WHITE FINISH | COLLAPSED LENGTH: ~155CM
CODE: 264TB | 22-25MM DIA. X 1.2WT – MAX. 274CM (9') - BLACK FINISH | COLLAPSED LENGTH: ~155CM
CODE: 264TG | 22-25MM DIA. X 1.2WT – MAX. 274CM (9') - GREY FINISH | COLLAPSED LENGTH: ~150CM



ALUMINIUM TENT POLES - TWIST LOCK - CLIP END

CODE: 264SC | 22-25MM DIA. X 1.2WT – MAX. 228CM (7'6") - CLIP END, MILL FINISH | COLLAPSED LENGTH: ~129CM
CODE: 264SWC | 22-25MM DIA. X 1.2WT – MAX. 228CM (7'6") - CLIP END, WHITE FINISH | COLLAPSED LENGTH: ~129CM
CODE: 264SBC | 22-25MM DIA. X 1.2WT – MAX. 228CM (7'6") - CLIP END, BLACK FINISH | COLLAPSED LENGTH: ~129CM
CODE: 264TC | 22-25MM DIA. X 1.2WT – MAX. 274CM (9') - CLIP END, MILL FINISH | COLLAPSED LENGTH: ~153CM
CODE: 264TWC | 22-25MM DIA. X 1.2WT – MAX. 274CM (9') - CLIP END, WHITE FINISH | COLLAPSED LENGTH: ~153CM
CODE: 264TBC | 22-25MM DIA. X 1.2WT – MAX. 274CM (9') - CLIP END, BLACK FINISH | COLLAPSED LENGTH: ~153CM
CODE: 264TGC | 22-25MM DIA. X 1.2WT – MAX. 274CM (9') - CLIP END, GREY FINISH | COLLAPSED LENGTH: ~153CM



ALUMINIUM TENT POLES - CLAMP ADJUSTMENT

CODE: 264SCL | 22-25MM DIA. X 1.2WT – MAX. 228CM (7'6") - MILL FINISH | COLLAPSED LENGTH: ~129CM
CODE: 264SWCL | 22-25MM DIA. X 1.2WT – MAX. 228CM (7'6") - WHITE FINISH | COLLAPSED LENGTH: ~129CM
CODE: 264SBCL | 22-25MM DIA. X 1.2WT – MAX. 228CM (7'6") - BLACK FINISH | COLLAPSED LENGTH: ~129CM
CODE: 264TCL | 22-25MM DIA. X 1.2WT – MAX. 274CM (9') - MILL FINISH | COLLAPSED LENGTH: ~153CM
CODE: 264TWCL | 22-25MM DIA. X 1.2WT – MAX. 274CM (9') - WHITE FINISH | COLLAPSED LENGTH: ~153CM
CODE: 264TBCL | 22-25MM DIA. X 1.2WT – MAX. 274CM (9') - BLACK FINISH | COLLAPSED LENGTH: ~153CM
CODE: 264TGCL | 22-25MM DIA. X 1.2WT – MAX. 274CM (9') - GREY FINISH | COLLAPSED LENGTH: ~153CM

ALUMINIUM SPREADER BARS



ALUMINIUM SPREADER BARS - CLAMP ADJUSTMENT

CODE: 264N | 22-25MM SPREADER BAR X 1.2WT – MAX. 228CM (7'6") - MILL FINISH | COLLAPSED LENGTH: ~130CM
CODE: 264NW | 22-25MM SPREADER BAR X 1.2WT – MAX. 228CM (7.6") - WHITE FINISH | COLLAPSED LENGTH: ~130CM
CODE: 264NB | 22-25MM SPREADER BAR X 1.2WT – MAX. 228CM (7.6") - BLACK FINISH | COLLAPSED LENGTH: ~130CM
CODE: 264P | 22-25MM SPREADER BAR X 1.2WT – MAX. 274CM (9') - MILL FINISH | COLLAPSED LENGTH: ~154CM
CODE: 264PB | 22-25MM SPREADER BAR X 1.2WT – MAX. 274CM (9') - BLACK FINISH | COLLAPSED LENGTH: ~154CM
CODE: 264PG | 22-25MM SPREADER BAR X 1.2WT – MAX. 274CM (9') - GREY FINISH | COLLAPSED LENGTH: ~154CM
CODE: 264PW | 22-25MM SPREADER BAR X 1.2WT – MAX. 274CM (9') - WHITE FINISH | COLLAPSED LENGTH: ~154CM



ALUMINIUM SPREADER BAR - CLAMP ADJUSTMENT - CLIP 2 ENDS

CODE: 264NC2 | 22-25MM SPREADER BAR X 1.2WT – MAX. 228CM (7'6") - MILL FINISH
CODE: 264NWC2 | 22-25MM SPREADER BAR X 1.2WT – MAX. 228CM (7'6") - WHITE FINISH
CODE: 264NBC2 | 22-25MM SPREADER BAR X 1.2WT – MAX. 228CM (7'6") - BLACK FINISH
CODE: 264PC2 | 22-25MM SPREADER BAR X 1.2WT – MAX. 274CM (9') - MILL FINISH
CODE: 264PWC2 | 22-25MM SPREADER BAR X 1.2WT – MAX. 274CM (9') - WHITE FINISH
CODE: 264PBC2 | 22-25MM SPREADER BAR X 1.2WT – MAX. 274CM (9') - BLACK FINISH



ALUMINIUM SPREADER BAR BEND SPIGOT - TO MATCH JAYCO VANS

CODE: 264PJS | 22-25MM SPREADER BAR X 1.2WT – MAX. 274CM (9') - MILL FINISH | COLLAPSED LENGTH: ~156CM



ALUMINIUM SPREADER BAR - SLOTTED BOW END

CODE: 264NSBE | 22-25MM SPREADER BAR X 1.2WT – MAX. 228CM (7'6") - MILL FINISH
CODE: 264PSBE | 22-25MM SPREADER BAR X 1.2WT – MAX. 274CM (9') - MILL FINISH

TENT POLE ACCESSORIES



SPIGOT

CODE: 38U | FITS 19MM TUBE O/D
 CODE: 38W | FITS 22MM TUBE O/D
 CODE: 38X | FITS 25MM TUBE O/D



THREADED SPIGOT

CODE: 38UT | FITS 19MM TUBE O/D
 CODE: 38WT | FITS 22MM TUBE O/D
 CODE: 38XT | FITS 25MM TUBE O/D



LONG SPIGOTS, 92MM

CODE: 38UL | FITS 19MM TUBE O/D
 CODE: 38WL | FITS 22MM TUBE O/D
 CODE: 38XL | FITS 25MM TUBE O/D



SOLID ALUMINIUM SPIGOT

CODE: 38YS | FITS 22MM TUBE O/D



BENT SPIGOT

CODE: 38UB | FITS 19MM TUBE O/D
 CODE: 38WB | FITS 22MM TUBE O/D
 CODE: 38XB | FITS 25MM TUBE O/D



HOOK BENT SPIGOT

CODE: HBS | FITS 22MM TUBE O/D
 CODE: HBS2 | FITS 25MM TUBE O/D



JAYCO BENT SPIGOT

CODE: JBS | FITS 22MM TUBE O/D SUITS
 JAYCO ROOF RAIL BRACKET



S BEND SPIGOT

CODE: SBS1 | FITS 22MM TUBE O/D
 CODE: SBS2 | FITS 25MM TUBE O/D

TENT POLE ACCESSORIES

MADE IN AUSTRALIA



BOW KNUCKLE

CODE: BK19 | FITS 19MM TUBE O/D
CODE: BK22 | FITS 22MM TUBE O/D
CODE: BK25 | FITS 25MM TUBE O/D

MADE IN AUSTRALIA



INTERNAL POLE CAP

CODE: 66Q | 16MM O/D
CODE: 66R | 19MM O/D
CODE: 66S | 22MM O/D
CODE: 66T | 25MM O/D

MADE IN AUSTRALIA



EXTERNAL POLE CAP

CODE: 66K | 16MM O/D
CODE: 66L | 19MM O/D
CODE: 66M | 22MM O/D
CODE: 66P | 25MM O/D

MADE IN AUSTRALIA



SQUARE 'C' CLIP SUPPORT CLIP

CODE: 38PSQ | FOR SQUARE RIDGE POLES

MADE IN AUSTRALIA



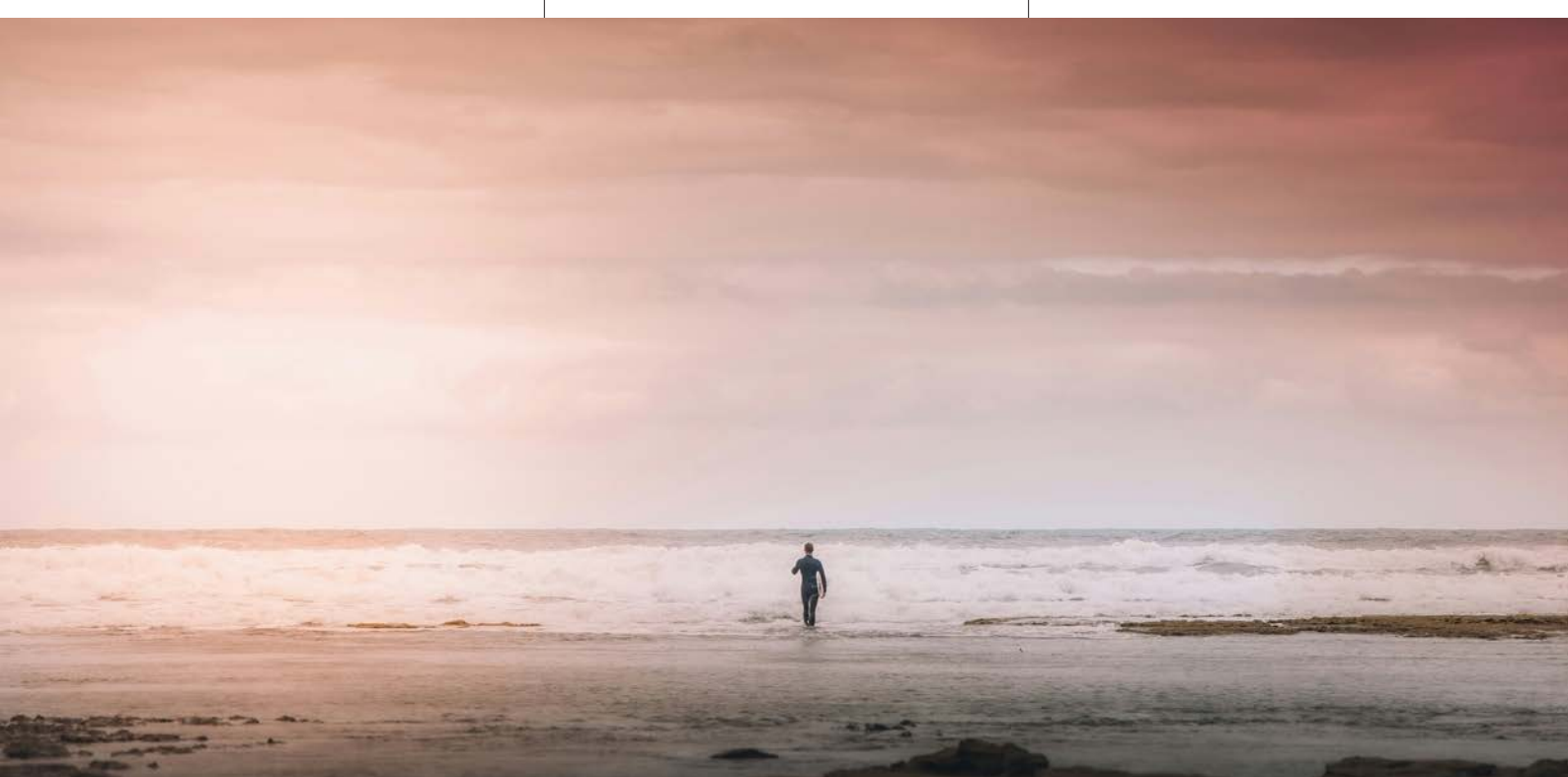
PLASTIC SNAP CLIP

CODE: 38PS | FITS/SNAPS 19MM TUBE O/D
CODE: 38PM | FITS/SNAPS 19/22MM TUBE O/D
CODE: 38PL | FITS/SNAPS 22MM TUBE O/D
CODE: 38PO | FITS/SNAPS 22/25MM TUBE O/D
CODE: 38PX | FITS/SNAPS 25MM TUBE O/D



JAYCO MOUNTING BRACKET SET

CODE: 38MSJ | REPLACEMENT ROOF RAIL BRACKET FOR JAYCO VANS



TENT POLE ACCESSORIES

MADE IN AUSTRALIA



BIRD BEAK & PLATE

CODE: 38E | FITS 22MM/25MM TUBE O/D

MADE IN AUSTRALIA



BOW MOUNT

CODE: 39T | BASE SIZE 60MM X 20MM

MADE IN AUSTRALIA



BOW MOUNT LARGE

CODE: 39TL | BASE SIZE 70MM X 30MM

MADE IN AUSTRALIA



WINDOW BRACKET

CODE: 38N | FITS 25MM C-CLIP

MADE IN AUSTRALIA



SPIGOT DOME

CODE: 38V

MADE IN AUSTRALIA



SPIGOT DOME & SPRING

CODE: 38VSP

MADE IN AUSTRALIA



SPLICE CLIP

CODE: 39K | FITS 6MM ROPE

MADE IN AUSTRALIA



PLASTIC POLE GROUND PLATE

CODE: 38P

MADE IN AUSTRALIA



T NUT & THUMBSCREW

CODE: 38Z | SUITS ALL STEEL POLES

TENT POLE ACCESSORIES

MADE IN AUSTRALIA



QUICK ACTION CLAMP

CODE: PCALC | FITS 25MM O/D TUBE
CODE: PCALC22 | FITS 22MM O/D TUBE

MADE IN AUSTRALIA



SPRING BUTTON CLIP

CODE: 38R

MADE IN AUSTRALIA



CAMLOK

CODE: CLK | FITS 22MM O/D TUBE

- Internal locking mechanism for aluminium pole

MADE IN AUSTRALIA



BOW ENDS

CODE: BE1 | FITS 19MM TUBE O/D
CODE: BE2 | FITS 22MM TUBE O/D
CODE: BE3 | FITS 25MM TUBE O/D

MADE IN AUSTRALIA



SLOTTED BOW END

CODE: BE2S | FITS 22MM TUBE O/D
CODE: BE3S | FITS 25MM TUBE O/D

MADE IN AUSTRALIA



SQUARE BOW END

CODE: SBE22 | FITS 22MM SQUARE TUBE O/D
CODE: SBE25 | FITS 25MM SQUARE TUBE O/D



ROOF RAIL BRACKETS

CODE: 38MS | S / STEEL
CODE: 38MSW | WHITE POWDER COATED S / STEEL
CODE: 38MSB | BLACK POWDER COATED S / STEEL
CODE: 38MSS | S/STEEL TO REPLACE AUSSIE TRAVELLER BRACKET



ROPES & PEGS

TENT PEGS	80
TENT PEG ACCESSORIES	81
PEGGY PEG	82
TORNADO TARPS	84
GUY ROPES	85
ROPE & ACCESSORIES	86
SHOCK CORD & ACCESSORIES	87



BULK BUY TENT PEGS



AUSTRALIAN MADE STEEL TENT PEGS

CODE: 39A | BULK PACK OF 250
4MM (DIA.) X 175MM (L)

CODE: 39B | BULK PACK OF 100
6.3MM (DIA.) X 225MM (L)

CODE: 39C | BULK PACK OF 100
8MM (DIA.) X 300MM (L)

CODE: 39AL | BULK PACK OF 100
6.3MM (DIA.) X 175MM (L)

CODE: 39BL | BULK PACK OF 100
6.3MM (DIA.) X 300MM (L)

CODE: 39D | BULK PACK OF 50
9.5MM (DIA.) X 350MM (L)

CODE: 39J | BULK PACK OF 100
8MM (DIA.) X 225MM (L)

- Manufactured from Australian hard galvanised steel
- Approx. 50% harder than mild steel



IMPORTED STEEL TENT PEGS

CODE: 39Ai | BULK PACK OF 100
4MM (DIA.) X 175MM (L)

CODE: 39Bi | BULK PACK OF 100
6.3MM (DIA.) X 225MM (L)

CODE: 39Di | BULK PACK OF 100
9.5MM (DIA.) X 350MM (L)

CODE: 39Ali | BULK PACK OF 100
6.3MM (DIA.) X 175MM (L)

CODE: 39Ci | BULK PACK OF 100
8MM (DIA.) X 300MM (L)

CODE: 39H | BULK PACK OF 50
12MM (DIA.) X 450MM (L)

- Zinc plated
- Individually barcoded



PLASTIC SAND PEGS

CODE: 39E
BULK PACK OF 100 | 220MM (L)

CODE: 39F
BULK PACK OF 100 | 300MM (L)

CODE: 39G
BULK PACK OF 50 | 500MM (L)

- Manufactured from Australian polypropylene

HANG SELL PEGS | ACCESSORIES



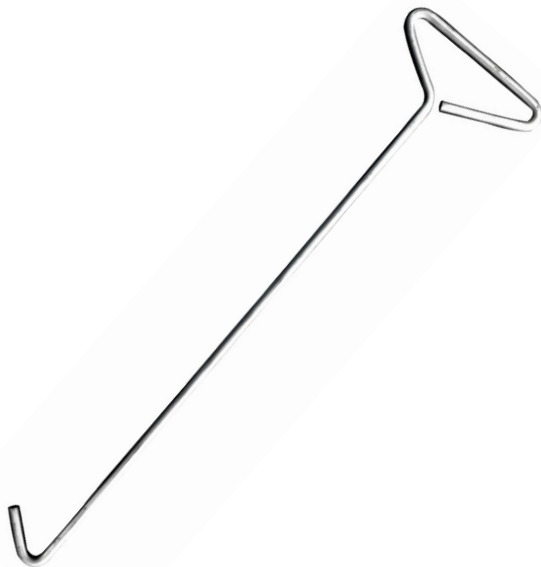
STEEL TENT PEGS, HANG SELL

CODE: 39AP | BAG OF 10 | 4MM D. X 175MM (L)
 CODE: 39ALP | BAG OF 10 | 6.3MM D. X 175MM (L)
 CODE: 39BP | BAG OF 10 | 6.3MM D. X 225MM (L)
 CODE: 39BLP | BAG OF 10 | 6.3MM D. X 300MM (L)
 CODE: 39JP | BAG OF 6 | 8MM D. X 225MM (L)
 CODE: 39CP | BAG OF 6 | 8MM D. X 300MM (L)
 CODE: 39DP | BAG OF 4 | 9.5MM D. X 350MM (L)



PLASTIC TENT PEGS, HANG SELL

CODE: 39EP | HANG SELL BAG OF 6 | 220MM (L)
 CODE: 39FP | HANG SELL BAG OF 4 | 30MM (L)
 CODE: 39GP | HANG SELL BAG OF 3 | 500MM (L)



TENT PEG PULLER

CODE: TPP1

- One piece design for easy removal of tent pegs

Dimensions: 590mm (l)



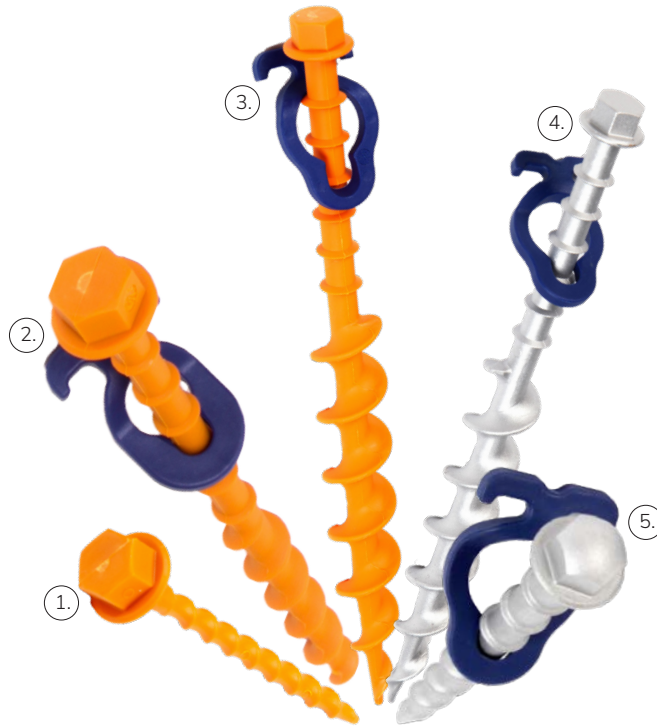
TENT PEG BAG

CODE: TPB

- Canvas bag for pegs & guy ropes

Dimensions:
 450mm (l) x 100mm (w) x 100mm (h)

PEGGY PEG



PEGGY PEG TENT PEGS

- | | | | | |
|--------------------------------------------------------------------------------------------------------------|--------------------------------------------------------------------------------------------------------|--------------------------------------------------------------------------------------------------------------|------------------------------------------------------------------------------------------------------------|------------------------------------------------------------------------------------------------------|
| <p>①. CODE: SUPP05
- Use for ground matting and sunshades
- Pack of 12
Dimensions: 120mm (l)</p> | <p>②. CODE: SUPP02
- For tarps, tents, awnings etc.
- Pack of 12
Dimensions: 200mm (l)</p> | <p>③. CODE: SUPP12
- Great for sandy areas and soft ground
- Pack of 2
Dimensions: 310mm (l)</p> | <p>④. CODE: SUPP13
- Best for gazebos, awnings, marquees
- Pack of 2
Dimensions: 310mm (l)</p> | <p>⑤. CODE: SUHP61
- Great for stony, rocky ground
- Pack of 4
Dimensions: 150mm (l)</p> |
|--------------------------------------------------------------------------------------------------------------|--------------------------------------------------------------------------------------------------------|--------------------------------------------------------------------------------------------------------------|------------------------------------------------------------------------------------------------------------|------------------------------------------------------------------------------------------------------|



HARDCORE COMBO TOOL

CODE: SUHP68

- Hardcore aluminium version of the drill adaptor and hand driver
- For drilling pegs where the torque is likely to be high
- Recommended for drilling pegs, not screwing in by hand



TIE STRAP

CODE: SUPP25

- Guy rope & heavy duty spring act as shock absorbers; blue rope clips for a secure connection
- Fast-action buckle ensures no loose ends
- Adjustable length; 1.5m - 3.0m



FIX & GO ANCHOR PLATE

CODE: SUPP16

- Anchor plate for securing the awning and ensuring stability
- Lock awning leg into position and secure with Peggy Peg screw-in pegs
- For almost all ground types & with most awning and tent pole styles

PEGGY PEG



STARTER KIT

CODE: SUPP03

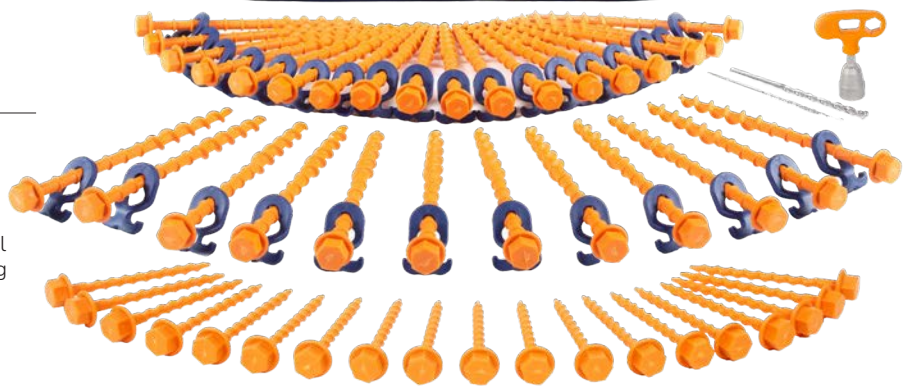
- Complete set-up starter pack
- Presented in a durable canvas bag, with additional space for storing extra pegs and/or other Peggy Peg accessories

Contains:

- 30 x standard pegs, 20 x small pegs,
- 1 x combo tool, 2 x drill bits

Pack dimensions:

80mm (d) x 360mm (w) x 130mm (h)



270° AWNING STARTER KIT

CODE: SUPP63

- The essential set up kit for the 270° Awning in all soil types
- Comes in a durable carry bag that is spacious enough to include other Peggy Peg products bought separately

Pack dimensions:

250mm (d) x 850mm (w) x 550mm (h)

Weight: 1.4kg

Contains:

- 3 x Screw-in pegs N 20cm, 3 x Hit-in screw out Hardcore pegs 15cm, 3 x Screw-in pegs L 32cm,
- 3 x Crocodiles Peggy, 6 x L Hooks, 3 x N Hooks,
- 3 x U-connectors, 3 x T-connectors, 1 x Combi alloy tool



TORNADO TARPS

- Strong & long lasting
- Swiss patented technology
- Guaranteed lifetime waterproof
- Three layers of cross-laminated XF film
- Tear resistant and ripstop material
- No peeling / cracking, puncture resistant
- Extra heavy duty

- High tensile strength
- 100% recyclable
- Engineered stretch and elongation
- Ultrasonic reinforced aluminium welded eyelets
- UV resistant for 3 years

3 LAYERS OF XF FILM

3 X SUPERIOR TO WOVEN TARPS

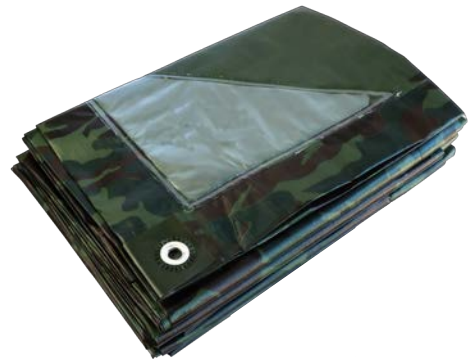
3 YEAR QUALITY GUARANTEE



SILVER TORNADO TARP, 120GSM

CODE: 12AXSUP4X6 | 4FT X 6FT | 1200MM X 1800MM
 CODE: 12AXSUP5X7 | 5FT X 7FT | 1500MM X 2100MM
 CODE: 12AXSUP6X8 | 6FT X 8FT | 1800MM X 2400MM
 CODE: 12AXSUP8X10 | 8FT X 10FT | 2400MM X 3000MM
 CODE: 12AXSUP10X12 | 10FT X 12FT | 3000MM X 3600MM
 CODE: 12AXSUP12X14 | 12FT X 14FT | 3600MM X 4300MM
 CODE: 12AXSUP12X16 | 12FT X 16FT | 3600MM X 4800MM
 CODE: 12AXSUP16X24 | 16FT X 24FT | 4800MM X 7300MM
 CODE: 12AXSUP20X26 | 20FT X 26FT | 6100MM X 7900MM
 CODE: 12AXSUP20X30 | 20FT X 30FT | 6100MM X 9100MM
 CODE: 12AXSUP22X30 | 22FT X 30FT | 6700MM X 9100MM
 CODE: 12AXSUP24X30 | 24FT X 30FT | 7300MM X 9100MM

- All measurements are finished sizes, use every centimetre you pay for



CAMO TORNADO TARP, 150GSM

CODE: 12AXSUP6X8CAMO | 6FT X 8FT | 1800MM X 2400MM
 CODE: 12AXSUP10X12CAMO | 10FT X 12FT | 3000MM X 3600MM
 CODE: 12AXSUP16X24CAMO | 16FT X 24FT | 4800MM X 7300MM

- All measurements are finished sizes, use every centimetre you pay for



SHELF READY CARTON



HOLD TIGHT TARP GRIPPER

CODE: SHO38I | INDIVIDUAL
 CODE: SHO38P | PACK OF 4
 CODE: SHO38C | DISPLAY CARTON HOLDS 15 X PACKS OF 4

GUY ROPES



PLASTIC SLIDE

CODE: 38L | SINGLE

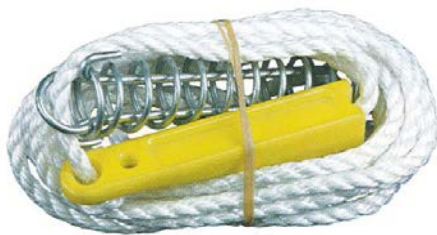
- Guy rope kit, 4mm rope with plastic slide



PLASTIC SLIDES

CODE: 38Q | SINGLE
CODE: 38QQ | DOUBLE

- Guy rope kit, 6mm rope with plastic slide



POLYMER SLIDE

CODE: 32B | SINGLE

- Guy rope kit, 6mm rope with metal spring and polymer slide



POLYMER SLIDES

CODE: 32BB | DOUBLE

- Guy rope kit, 6mm rope with metal spring and polymer slide



TIMBER SLIDES

CODE: 38J | SINGLE
CODE: 38JJ | DOUBLE

- Guy rope kit, 6mm rope with heavy duty wood slide



TIMBER SLIDES

CODE: 38K | SINGLE
CODE: 38KK | DOUBLE

- Guy rope kit, 6mm rope with metal spring and heavy duty wood slide

ROPE & ACCESSORIES



ROPE COIL

POLYPROPYLENE ROPE

CODE: 34AC | 4MM COIL | 250M
 CODE: 34BC | 6MM COIL | 250M
 CODE: 34DC | 10MM COIL | 250M
 CODE: 34EC | 12MM COIL | 250M



ROPE REEL

SILVER ROPE

CODE: 34HR | 4MM REEL | 300M
 CODE: 34FC | 6MM COIL | 250M
 CODE: 34FR | 6MM REEL | 300M
 CODE: 34GC | 8MM COIL | 250M
 CODE: 34GR | 8MM REEL | 200M
 CODE: 34IC | 10MM COIL | 250M
 CODE: 34IR | 10MM REEL | 125M
 CODE: 34JC | 12MM COIL | 250M
 CODE: 34JR | 12MM REEL | 125M



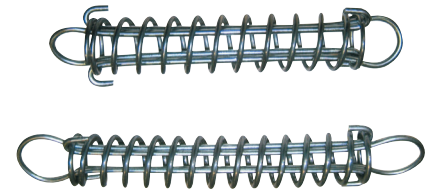
VENETIAN BLIND CORD

CODE: VBB | BLACK | 3MM (DIA.) X 500MM (L)
 CODE: VBW | WHITE | 3MM (DIA.) X 500MM (L)



MINI COILS

CODE: MC1 | 4MM (DIA.) X 20M (L)
 CODE: MC2 | 6MM (DIA.) X 20M (L)



TRACE SPRINGS

CODE: 38C | 150MM / 6"
 CODE: 38D | 200MM / 8"



POLYMER SLIDE

CODE: 32C

- To suit 4mm, 6mm & 8mm rope



TIMBER SLIDE

CODE: 38G

Dimensions:
 30mm (dia.) x 140mm (l)



COMBO SLIDE

CODE: 38B

- Plastic slide to suit 4mm & 6mm rope

SHOCK CORD & ACCESSORIES



BLACK SHOCK CORD

CODE: SCO2 | 2MM (DIA.) X 100M (L)
 CODE: SCO3 | 3MM (DIA.) X 100M (L)
 CODE: SCO4 | 4MM (DIA.) X 100M (L)
 CODE: SCO5 | 5MM (DIA.) X 100M (L)

CODE: SCO6 | 6MM (DIA.) X 100M (L)
 CODE: SCO7 | 7MM (DIA.) X 50M (L)
 CODE: SCO8 | 8MM (DIA.) X 50M (L)
 CODE: SCO10 | 10MM (DIA.) X 50M (L)



SHOCK CORD LOOP

CODE: LP1 | LOOP 70MM; CORD 150MM
 CODE: LP2 | LOOP 80MM; CORD 170MM
 CODE: LP3 | LOOP 90MM; CORD 190MM
 CODE: LP4 | LOOP 100M; CORD 209MM



FASTENER HOOK

CODE: 66A | 6MM
 CODE: 66B | 8MM



SHOCK CORD HOOK

CODE: KB2 | PLASTIC
 CODE: KB3 | METAL



SHOCK CORD KNOB

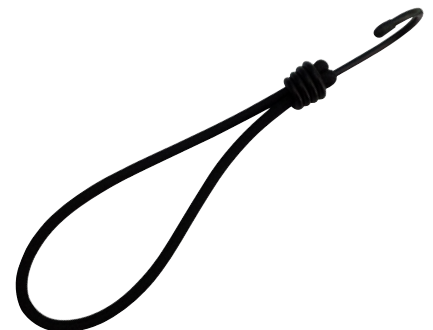
CODE: KB1



BUNGEE CORD WITH TOGGLE BALL

CODE: ELO2 | BULK
 CODE: ELO2P | PACK OF 2, HANG SELL

- For tying down tarpaulins and/or privacy screens



ELASTIC SHOCK CORD WITH HOOK

CODE: ESCH | PACK OF 2, HANG SELL
 CODE: ESCHB | BULK

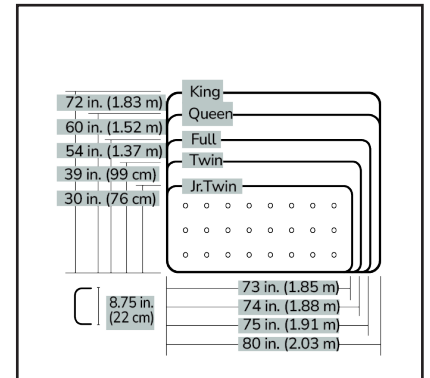
- Tension absorber with plastic coated hook

BEDDING

AIR BEDS	90
HIKER MATTRESS	90
TREKWAY BY SUPEX	91



AIR BEDS | HIKER MATTRESS



VELOUR AIR BEDS

CODE: AIRB1 | SINGLE | 185CM (L) X 76CM (W) X 22CM (D)
 CODE: AIRB2 | TWIN | 188CM (L) X 99CM (W) X 22CM (D)
 CODE: AIRB3 | DOUBLE | 191CM (L) X 137CM (W) X 22CM (D)
 CODE: AIRB4 | QUEEN | 203CM (L) X 152CM (W) X 22CM (D)

- SID Valve (Smart Inflation/Deflation)
- Coil beam construction
- PVC base
- Velour top

BOSTON VALVE

CODE: BV

- Replacement Boston Valve to suit all Supex Velour Air Beds



HIKER SELF INFLATING MAT

CODE: AB507

- Single person self inflating mattress, perfect for hikers
- Includes carry bag
- R Value: 3.2
- Weight: 880g

Dimensions:
 185cm (l) x 53cm (w) x 35cm (d)



TREKWAY SELF INFLATING MAT, 10CM

CODE: AB508 | SINGLE | 195CM (L) X 80CM (W) X 10CM (D)
CODE: AB509 | DOUBLE | 195CM (L) X 140CM (W) X 10CM (D)

- Extra comfort self inflating mattress (10cm thickness)
- Made from high quality thermoplastic polyurethane
- Includes carry bag
- Top & side walls: 30D stretch-knitted fabric-coated TPU
- Base: 210D oxford with TPU coating
- R value: 8.5



TREKWAY CROSS LEG STRETCHER

CODE: 33L

- 150kg weight rating
- 400D PVC
- product weight: 7.1kg

Dimensions:
2170mm (l) x 770mm (w) x 520mm (h)

FURNITURE

ACTION CHAIRS	94
DIRECTORS CHAIRS	95
FOLDING CHAIRS	96
TABLES	97
FOLDING STOOLS & CHAIRETTE	98
WANDERLITE BY SUPEX	100



ACTION CHAIRS



KIDS ACTION CHAIR

CODE: 23KS

- Made from durable 600D PVC fabric in green and pink
 - Features mesh cup holder and includes carry bag
 - Each carton contains 3 x pink and 3 x green chairs
- Weight Rating: 80kg / Product Weight: 2.0kg

Dimensions: Back: 60.5cm / Seat: 31cm (h) x 33.5cm (d) x 41cm (w)
Stored Dimensions: 14cm (d) x 16cm (w) x 65cm (h)



CAMP QUAD CHAIR

CODE: 23L

- Made from durable 600D PVC fabric with 19mm powder coated steel frame
 - Features mesh cup holder, includes carry bag
- Weight Rating: 100kg / Product Weight: 2.2kg

Dimensions: Back: 91cm / Seat: 44cm (h) x 50cm (d) x 45cm (w)
Stored Dimensions: 20cm (d) x 20cm (w) x 108cm (h)



KING SIZE ACTION CHAIR

CODE: 23K

- Made from durable 600D PVC fabric with 19mm powder coated steel frame, includes carry bag
 - Features fabric cup holder, side pocket and quilted design
- Weight Rating: 130kg / Product Weight: 3.5kg

Dimensions: Back: 111cm / Seat: 50cm (h) x 53cm (d) x 59cm (w)
Stored Dimensions: 23cm (d) x 23cm (w) x 104cm (h)



SUPER KING SIZE ACTION CHAIR

CODE: 23P

- Made from 600D PVC fabric with 22mm black powder coated steel frame, includes carry bag
 - Features insulated cup holder & cooler, bottle opener, padded headrest, adjustable armrests and mesh side pocket
- Weight rating: 150kg / Product Weight: 6.3kg

Dimensions: Back: 109cm / Seat: 46cm (h) x 51cm (d) x 62cm (w)
Stored Dimensions: 17cm (d) x 50cm (w) x 80cm (h)

DIRECTORS CHAIRS

ALUMINIUM DIRECTORS CHAIR

CODE: 23JA

- Lightweight frame, 600D PVC cover
 - Features foldable side table, cup holder, anti-tip leg design, single piece cover, padded arm rests
- Weight rating: 100kg / Product Weight: 2.9kg

Dimensions: Back: 79cm / Seat: 44cm (h) x 36cm (d) x 50cm (w)
Stored Dimensions: 10cm (d) x 50cm (w) x 80cm (h)



FOLDING DIRECTORS CHAIR

CODE: 23H

- Back rest detaches and folds away
 - Features: front & back anti-tip leg design, foldable side table, cup holder, carry bag
- Weight Rating: 130kg / Product Weight: 6.5kg

Dimensions: Back: 93cm / Seat: 46cm (h) x 40cm (d) x 57cm (w)
Stored Dimensions: 13cm (d) x 70cm (w) x 47cm (h)



STEEL DIRECTORS CHAIR

CODE: 23JS

- Black powder coated steel frame
 - Made from 600D PVC fabric
 - Features: front and back anti-tip leg design, foldable side table, cup holder, single piece cover
- Weight rating: 120kg
Product Weight: 6.3kg

Dimensions: Back: 85cm / Seat: 43cm (h) x 42cm (d) x 47cm (w)
Stored Dimensions: 20cm (d) x 30cm (w) x 85cm (h)



FOLDING CHAIRS & STOOLS



FIVE POSITION HARD ARM CHAIR

CODE: 23S

- Made from 600D PVC fabric with 22mm black powder coated steel frame
 - Features: anti-tip leg design, cup holder, wine, five backrest positions glass holder
- Weight Rating: 130kg / Product Weight: 6.0kg

Dimensions: Back: 105cm / Seat: 46.5cm (h) x 47cm (d) x 49cm (w)
Stored Dimensions: 13cm (d) x 60cm (w) x 98cm (h)



BEACH CHAIR

CODE: 23B

- Made from hard-wearing 600D PVC fabric with 22mm steel powder coated frame
 - Features: foldable design, built-in towel rail (on back, not seen)
- Weight Rating: 100kg

Dimensions: 60cm (d) x 45cm (w) x 60cm (h)
Stored Dimensions: 10cm (d) x 45cm (w) x 82cm (h)



SMALL TRI LEG STOOL

CODE: 21E

- 19mm steel legs with 600D PVC fabric cover
- Weight rating: 100kg / Product Weight: 0.9kg

Dimensions: Seat: 30cm (d) x 30cm (w) / Stool height: 50cm
Stored Dimensions: 7cm (d) x 8cm (w) x 58cm (h)



LARGE TRI LEG STOOL

CODE: 21F

- 19mm steel legs with 600D PVC fabric cover
- Weight rating: 100kg / Product Weight: 1.4kg

Dimensions: Seat: 33cm (d) x 33cm (w) / Stool height: 65cm
Stored Dimensions: 7cm (d) x 8cm (w) x 77cm (h)

TABLES



UTILITY TABLE

CODE: 31K

- Portable & lightweight
- Easy to carry, quick to set up
- Aluminium frame with MDF top
- Folds flat to save space

Dimensions:
38cm (d) x 53cm (w) x 64cm (h)
Product Weight: 2.5kg



PERSONAL TABLE

CODE: 31M

- Blow-moulded for superior strength
- Folds flat for the space efficiency
- Four adjustable height positions
- Steel legs, 19mm dia.

Dimensions:
50cm (d) x 77cm (w)
Heights: 12cm, 50cm, 63.5cm, 74cm
Product Weight: 5.0kg



SMALL FOLD IN HALF TABLE

CODE: 31S

- Lightweight fold in half table
- Black aluminium frame with woodgrain style MDF top
- Small & compact for efficient use of space

Dimensions:
39.5cm (d) x 60cm (w) x 40cm (h)
Product Weight: 2.0kg



LIGHTWEIGHT TABLE

CODE: 31G

- Classic camping table, easy to carry and assemble
- Folding legs for compact storage
- Aluminium frame with MDF top

Dimensions:
60cm (d) x 80cm (w) x 70cm (h)
Product Weight: 3.6kg

FOLDING STOOLS & CHAIRETTE



SMALL HOOP LEG STOOL

CODE: 21B

- Galvanised 19mm steel frame
 - Canvas cover {colours vary}
- Dimensions:
- Stool height - 41cm
 - Seat area - 22cm (d) x 31cm (w)



LARGE HOOP LEG STOOL

CODE: 21C

- Galvanised 19mm steel frame
 - Canvas cover {colours vary}
- Dimensions:
- Stool height - 45cm
 - Seat area - 28cm (d) x 34cm (w)



CHAIRETTE

CODE: 23D

- Galvanised 19mm steel frame
 - Canvas cover {colours vary}
- Dimensions:
- Stool height - 40cm
 - Seat area - 32cm (d) x 33cm (w)



A LIFETIME OF ADVENTURE



WANDERLITE™ BY SUPEX FURNITURE



WANDERLITE™ ULTRA HIKER CHAIR

CODE: 23G

- Ultralight collapsible chair made from 600D Oxford cloth with high strength aluminium alloy frame
- Features: easy assembly, foldable legs, scientifically structured design
- Weight Rating: 150kg / Product Weight: 0.92kg

Dimensions: 51cm (d) x 57cm (w) x 65cm (h)
- Fits into carry bag - 11cm (d) x 15cm (w) x 36cm (l)



WANDERLITE™ MIGHTY HIKER CHAIR

CODE: 23F

- Medium lightweight collapsible chair made from 600D Oxford cloth with high strength aluminium alloy frame
- Features: mesh pocket, bottle holder, easy assembly, foldable legs, scientifically structured design
- Weight Rating: 120kg / Product Weight: 1.39kg

Dimensions: 64cm (d) x 65cm (w) x 79 cm (h)
- Fits into carry bag - 11cm (d) x 47cm (l)



WANDERLITE™ VOYAGER CHAIR

CODE: 23M

- Large lightweight collapsible chair made from 600D Oxford cloth with high strength aluminium alloy frame
- Features: easy assembly, foldable legs, scientifically structured design, padded headrest
- Weight Rating: 120kg / Product Weight: 1.45kg

Dimensions: 80cm (d) x 53cm (w) x 97cm (h)
- Fits into carry bag - 10cm (d) x 47cm (l)



WANDERLITE™ BY SUPEX FURNITURE



WANDERLITE™ NOMAD TABLE

CODE: 23W

- Super-light slat table, includes carry bag
- High strength aluminium alloy frame with black plastic clip-on slats
- Features: easy assembly, flat-pack legs and slats, scientifically structured design
- Weight Capacity: 15kg / Product Weight: 1.2kg

Dimensions: 40cm (d) x 56cm (w) x 40cm (h)



WANDERLITE™ SEEKER TABLE

CODE: 23X

- Reinforced fabric top table
- 300D rip-stop polyester with high strength aluminium alloy frame
- Features: two large cup holders, anti-sink foot stops
- Weight capacity: 15kg

Dimensions: 38cm (d) x 59cm (w) x 40cm (h)



COOKWARE

DUTCH OVENS	104
TRIPODS	105
CAST IRON FRYPANS	106
CAST IRON PANS	107
TOASTERS	107
ZEBRA STAINLESS STEELWARE	108
WATER CONTAINERS	112
FUEL CONTAINERS	113



DUTCH OVENS



PRE-SEASONED DUTCH OVENS

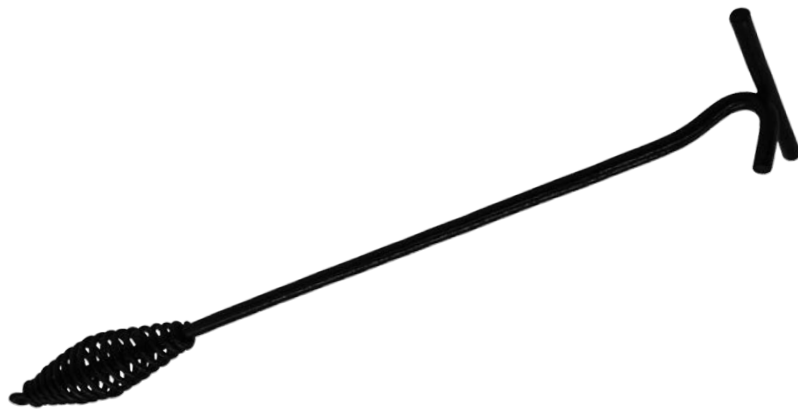
CODE: DO25 | 2.5 QUART
CODE: DO45 | 4.5 QUART

CODE: DO90 | 9 QUART
CODE: DO100 | 10 QUART

CODE: DO120 | 12 QUART



DUTCH OVENS | TRIPODS



DUTCH OVEN LID LIFTER

CODE: DOL1

Dimensions:
425mm (l)



LARGE TRIPOD

CODE: TP3 | 10MM (DIA.) X 900MM (H)
CODE: TP4 | 10MM (DIA.) X 1200MM (H)

- Solid steel
- Includes carry bag



SMALL TRIPOD

CODE: TP5

- Multipurpose; can be used with frypans, skillets, ovens, woks and saucepans
- Folds flat for easy storage
- Includes carry bag

CAST IRON FRYPANS



RECTANGULAR GRIDDLE PAN

CODE: FPFH1

- Pre-seasoned with a wooden handle and griddle base

Dimensions:
210mm (w) x 350mm (d)



ROUND GRIDDLE PAN

CODE: FPFH2

- Pre-seasoned with a wooden handle and griddle base

Dimensions:
240mm dia.



SQUARE GRIDDLE PAN

CODE: FPFH3

- Pre-seasoned with a wooden handle and griddle base

Dimensions:
240mm (w) x 240mm (d)



ROUND FRYPANS

CODE: FP9 | ROUND | 220MM DIA.
CODE: FP11 | ROUND | 280MM DIA.
CODE: FP12 | ROUND | 300MM DIA.

- Pre-seasoned with wooden screw-in handle



SQUARE FRYPANS

CODE: FP10

- Pre-seasoned with wooden screw-in handle
- Square, griddle base

Dimensions:
250mm (w) x 250mm (d)

CAST IRON COOKWARE | TOASTERS



SMALL SAUCEPAN

CODE: SP2

- Pre-seasoned with wooden handle

Volume:
- Two quart



MEDIUM SAUCEPAN

CODE: SP3

- Pre-seasoned with wooden handle

Volume:
- Three quart



SINGLE JAFFLE IRON

CODE: JISL

- Pre-seasoned with metal clasp and wooden handle

Dimensions:
130mm (w) x 140mm (d)



DOUBLE JAFFLE IRON

CODE: JIDL

- Pre-seasoned with metal clasp and wooden handle

Dimensions:
275mm (w) x 140mm (d)



SINGLE SLICE TOASTER

CODE: MBSTT

- Single slice box toaster

Dimensions:
110mm (d) x 165mm (w) x 30mm (h)



FOUR SLICE TOASTER

CODE: M4SLT

- Four slice box toaster

Dimensions:
200mm (dia.) x 15mm (h) | Assembled height - 220mm

ZEBRA STAINLESS STEELWARE



MUG

CODE: SUP110007 | 7CM DIA. | 250ML
CODE: SUP110008 | 8CM DIA. | 400ML
CODE: SUP110009 | 9CM DIA. | 500ML
CODE: SUP110010 | 10CM DIA. | 750ML



MUG WITH LID

CODE: SUP110108 | 8CM DIA. | 400ML
CODE: SUP110109 | 9CM DIA. | 500ML
CODE: SUP110110 | 10CM DIA. | 750ML



PLATE

CODE: SUP120020 | 20CM DIA.
CODE: SUP120023 | 23CM DIA.



BOWL

CODE: SUP111014 | 14CM DIA. | 800ML
CODE: SUP111018 | 18CM DIA. | 1.6L

ZEBRA STAINLESS STEELWARE



LOOP HANDLE POT

CODE: SUP151612 | 12CM DIA. | 1.4L
CODE: SUP151614 | 14CM DIA. | 2.0L
CODE: SUP151616 | 16CM DIA. | 3.0L



BILLY WITH LID

CODE: SUP113114

- Billy style tea pot with seamless interior, fitted lid, folding handle and slotted spout
- 14cm diameter | 2.0L capacity



WHISTLING KETTLE

CODE: SUP113524 | 3.5L CAPACITY

ZEBRA STAINLESS STEELWARE



CAMPING SET

CODE: SUP184211

- Three piece camping set with carry bag
- Includes two pots (one with folding handle) and frying pan with folding handle

Dimensions:

Pot with handle - 14cm dia., 1.2L capacity

Pot with folding handle - 16cm dia., 1.7L capacity

Frying pan with folding handle - 16cm dia., 700ml capacity



STOCK POT

CODE: SUP171228

- For use on all stoves
- 28cm diameter
- 17.2L capacity

ZEBRA STAINLESS STEELWARE



LUNCH BOX

CODE: SUP152016

- Rectangular lunch box
- Includes round inner box

Dimensions:
16cm (l) x 12.5cm (w) x 5.8cm (h)
780ml capacity



ROUND LUNCH BOX

CODE: SUP152312 | 12CM D. | 700ML
CODE: SUP152314 | 14CM D. | 1.1L



TIERED LUNCH BOX

CODE: SUP152042

- Two tier oval lunch box
- Includes inner box
- Sturdy lock, foldable handle

Dimensions:
14cm diameter | 1.1L capacity



TIERED FOOD CARRIER

CODE: SUP150103 | 10CM DIA. | THREE TIER FOOD CARRIER
CODE: SUP150122 | 12CM DIA. | TWO TIER FOOD CARRIER
CODE: SUP150142 | 14CM DIA. | TWO TIER FOOD CARRIER

WATER CONTAINERS



ROUND PLASTIC BASIN

CODE: PCR

Dimensions:
- 30mm (dia.) x 120mm (h)
- Volume: 8L



RECTANGLE PLASTIC BASIN

CODE: PCS

Dimensions:
- 300mm (d) x 360mm(w) x 120mm (h)
- Volume: 9L



COLLAPSIBLE CONTAINER

CODE: CWC10 | VOLUME: 10L
CODE: CWC20 | VOLUME: 20L



SMALL WATER CUBE

CODE: PC15 | VOLUME: 15L

- Made from food grade HDPE
- BPA free



MEDIUM WATER CUBE

CODE: PC20 | VOLUME: 20L

- Made from food grade HDPE
- BPA free



LARGE WATER CUBE

CODE: PC25 | VOLUME: 25L

- Made from food grade HDPE
- BPA free



SML. WATER JERRY CAN

CODE: AT5 | VOLUME: 5L

- Food grade HDPE, BPA free



MED. WATER JERRY CAN

CODE: AT10 | VOLUME: 10L

- Food grade HDPE, BPA free



LRG. WATER JERRY CAN

CODE: AT20 | VOLUME: 20L

- Food grade HDPE, BPA free



HD WATER JERRY CAN

CODE: AT20G | VOLUME: 20L

- Food grade HDPE, BPA free
- Heavy duty

FUEL CONTAINERS | ACCESSORIES

MADE IN AUSTRALIA



FUEL DRUMS

CODE: J5 | VOLUME: 5L
 CODE: J10 | VOLUME: 10L
 CODE: J20C | VOLUME: 20L | RED
 CODE: J20F | VOLUME: 20L | YELLOW
 - Fully approved fuel container; red
 - Fully approved diesel container; yellow

MADE IN AUSTRALIA



UNIVERSAL ON/OFF TAP

CODE: PCT



CAP AEROFLOW TAP

CODE: PCAFC

- To suit water cube

MADE IN AUSTRALIA



ON/OFF SNAP TAP

CODE: SNT | SINGLE ITEM
 CODE: SNT1 | PREPACKED



BUNG AEROFLOW TAP

CODE: PCAFB

- To suit water cube and / or jerry can

MADE IN AUSTRALIA



UNIVERSAL BUNG

CODE: PCB

MADE IN AUSTRALIA



DRUM SPANNER

CODE: SPA

- Assists opening water cube caps & bungs

MADE IN AUSTRALIA



CAP

CODE: PCC

- To suit water cube

BEACH & SHELTERS

BOAT SETS	116
OAR SETS	117
PUMPS	117
TENTS & SHELTERS	118



BOAT SETS



SINGLE SEAT BOAT SET

CODE: BT1

- Single seat inflatable boat; inflatable floor for comfort
- Features: tow ring & tow rope, built-in grommets
- Weight Rating: 80kg

Dimensions:
107cm (w) x 165cm (l)



DOUBLE SEAT BOAT SET

CODE: BT2

- Double seat inflatable boat; inflatable floor for comfort
- Features: tow ring & tow rope, built-in grommets, oar clasps
- Includes oar set & foot pump

Dimensions:
115cm (w) x 197cm (l)

OAR SETS | PUMPS



PLASTIC OAR SET

CODE: OAR1

- Plastic oar set with ribbed blade
- Three section structure for easy assembly



ALUMINIUM OAR SET

CODE: OAR2

- Sectional aluminium oar set
- Can be used as one twin blade paddle; 2.18m (l)
OR two single blade paddles, each 1.45m (l)



12V AIR PUMP

CODE: PP1



240V AIR PUMP

CODE: PP2



FOOT BELLOWS

CODE: PP3

- Foot bellows, 5000CC



PUSH / PULL PUMP

CODE: PP4

- 13000CC
- Inflates/deflates on up/down stroke

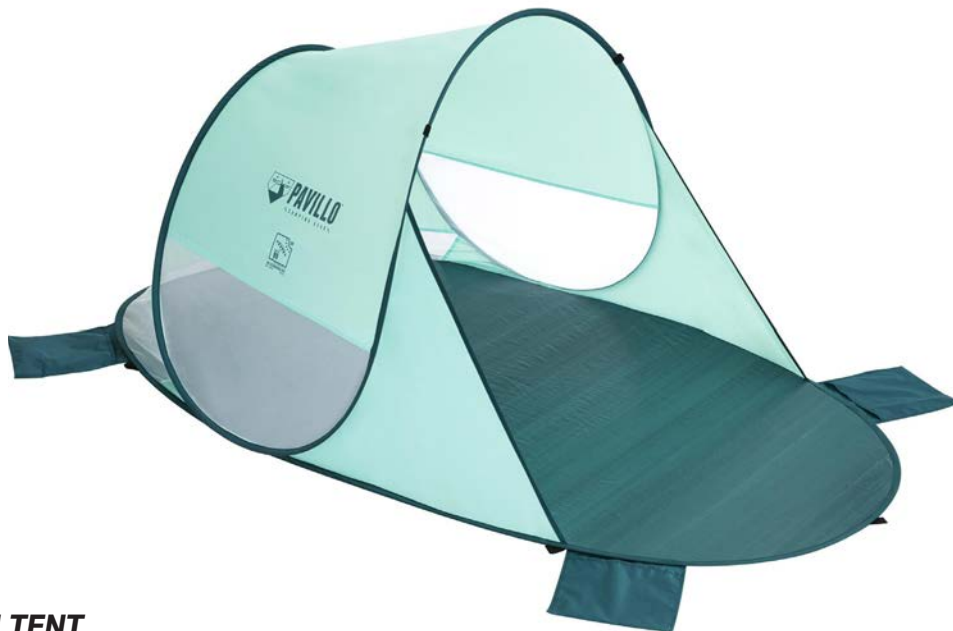
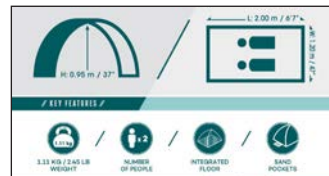
BEACH SHELTERS



BEACH TENT

CODE: SUP68105

- Simple set up
- Includes carry bag for easy transport
- Capacity: 2 people
- Fabric: 190T polyester PA coated
- Ground protection: 100g/m² PE



SECURA BEACH TENT

CODE: 68107

- Sets up in seconds
- Protection from sun with UPF40+ rating
- Capacity: 2 people
- Fabric: 190T polyester PA silver coated
- Ground protection: 120g/m² PE



TENTS & SHELTERS



RAMBLE X2 TENT

CODE: 68001

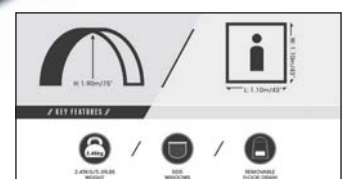
- Easy to set up and convenient to carry
- Capacity: 2 people
- Fabric: 170T polyester PA coated
- Ground protection: 110g/m² PE



STATION PORT CHANGING STATION

CODE: SUP68002

- Offers privacy by the beach, lake or pool
- Two side windows and removable floor drain
- Capacity: 1 person
- Fabric: 170T polyester PA Coated
- Ground protection: 110g/m² PE



CAMPSITE ACCESSORIES



CAMPSITE IMPLEMENTS

122

SHOWERS

123



CAMPSITE IMPLEMENTS



FIXED SHOVEL

CODE: SHV1

- Fixed handle shovel
- Wooden handle, 750mm (l)



FOLDING SHOVEL

CODE: SHV2

- Tri-fold metal handle shovel
- Includes carry bag



MALLET

CODE: MAL

- Stone hammer
- Weight: 1.2kg
- Fibreglass handle, 230mm (l)



CAMPING HATCHET

CODE: HTC1

- Camping hatchet
- Weight: 0.6kg
- Fibreglass handle, 300mm (l)



MINI SPLITTER

CODE: MISP

- Mini block splitter / stone hammer
- Weight: 1.75kg
- Fibreglass handle, 330mm (l)

SHOWERS



SOLAR SHOWER

CODE: SOL1 | CAPACITY: 20L



CANVAS SHOWER

CODE: 41BSC | WITH PLASTIC ROSE | CAPACITY: 20L



A photograph of a forest with large tree trunks and sunlight filtering through the canopy. The text 'MAINTENANCE & REPAIR' is overlaid in white, bold, italicized font.

MAINTENANCE & REPAIR

WEBBING	126
HOOK & LOOP TAPE	126
CANVAS ACCESSORIES	127
STIMEX FABRIC TREATMENT	128
TEAR AID	129



WEBBING | HOOK & LOOP TAPE



POLY WEBBING

CODE: PW20 | 20MM (W) X 50M (L)
 CODE: PW25 | 25MM (W) X 50M (L)
 CODE: PW38 | 38MM (W) X 50M (L)
 CODE: PW50 | 50MM (W) X 50M (L)



SEAT BELT WEBBING

CODE: SBW25 | 25MM (W) X 100M (L)
 CODE: SBW50 | 50MM (W) X 100M (L)



BACK-TO-BACK HOOK & LOOP TAPE

CODE: BB25 | BLK. | 25MM (W) X 12.5M (L)
 CODE: BB50 | BLK. | 50MM (W) X 12.5M (L)



HOOK & LOOP TAPE, 25MM SEW ON

CODE: HSW25BL | BLACK HOOK | 25MM (W) X 25M (L)
 CODE: LSW25BL | BLACK LOOP | 25MM (W) X 25M (L)
 CODE: HSW25WH | WHITE HOOK | 25MM (W) X 25M (L)
 CODE: LSW25WH | WHITE LOOP | 25MM (W) X 25M (L)

CODE: HSW25BE | BEIGE HOOK | 25MM (W) X 25M (L)
 CODE: LSW25BE | BEIGE LOOP | 25MM (W) X 25M (L)
 CODE: HSW25GR | GREY HOOK | 25MM (W) X 25M (L)
 CODE: LSW25GR | GREY LOOP | 25MM (W) X 25M (L)

HOOK & LOOP TAPE, 50MM SEW ON

CODE: HSW50BL | BLACK HOOK | 50MM (W) X 25M (L)
 CODE: LSW50BL | BLACK LOOP | 50MM (W) X 25M (L)
 CODE: HSW50WH | WHITE HOOK | 50MM (W) X 25M (L)
 CODE: LSW50WH | WHITE LOOP | 50MM (W) X 25M (L)

CODE: HSW50BE | BEIGE HOOK | 50MM (W) X 25M (L)
 CODE: LSW50BE | BEIGE LOOP | 50MM (W) X 25M (L)
 CODE: HSW50GR | GREY HOOK | 50MM (W) X 25M (L)
 CODE: LSW50GR | GREY LOOP | 50MM (W) X 25M (L)

HOOK & LOOP TAPE, 25MM SELF ADHESIVE

CODE: HSA25BL | BLACK HOOK | 25MM (W) X 25M (L)
 CODE: LSA25BL | BLACK LOOP | 25MM (W) X 25M (L)
 CODE: HSA25WH | WHITE HOOK | 25MM (W) X 25M (L)
 CODE: LSA25WH | WHITE LOOP | 25MM (W) X 25M (L)

HOOK & LOOP TAPE, 50MM SELF ADHESIVE

CODE: HSA50BL | BLACK HOOK | 50MM (W) X 25M (L)
 CODE: LSA50BL | BLACK LOOP | 50MM (W) X 25M (L)
 CODE: HSA50WH | WHITE HOOK | 50MM (W) X 25M (L)
 CODE: LSA50WH | WHITE LOOP | 50MM (W) X 25M (L)

CANVAS ACCESSORIES



SIDE RELEASE BUCKLES

CODE: SRB19 | 19MM
 CODE: SRB25 | 25MM
 CODE: SRB38 | 38MM
 CODE: SRB50 | 50MM



TRIGLIDES

CODE: 66C | 19MM
 CODE: 66D | 25MM
 CODE: 66E | 38MM
 CODE: 66F | 50MM



LADDER LOCK

CODE: 66G | 19MM
 CODE: 66H | 25MM



D RINGS

CODE: DR1 |
 3.2MM (DIA.) X 25MM (W) X 21MM (D)
 CODE: DR2
 5MM (DIA.) X 25MM (W) X 23MM (D)
 CODE: DR3
 6MM (DIA.) X 25MM (W) X 38MM (D)
 CODE: DR4
 6MM (DIA.) X 25MM (W) X 46MM (D)



VERTICAL T-TOGGLE WITH METAL FLIPPER

CODE: 66NW | WHITE
 CODE: 66NB | BLACK
 CODE: 66NWD | WHITE, DOUBLE
 CODE: 66NBD | BLACK, DOUBLE



HORIZONTAL T-TOGGLE WITH METAL FLIPPER

CODE: 66OW | WHITE
 CODE: 66OB | BLACK
 CODE: 66OWD | WHITE, DOUBLE
 CODE: 66OBD | BLACK, DOUBLE



CANVAS TO CANVAS T-TOGGLE WITH METAL FLIPPER

CODE: 66IW | WHITE
 CODE: 66IB | BLACK
 CODE: 66IWD | WHITE, DOUBLE
 CODE: 66IBD | BLACK, DOUBLE

STIMEX FABRIC TREATMENT



WATERPROOFER

CODE: STWP | SPRAY CAN, 500ML
CODE: STWB | LIQUID, 500ML

- High concentrate textile coating for fabric treatment
- Permanently elastic and breathable
- Can be applied to moist fabric
- Liquid dilutes to 4L
- Spray covers 20m²



OUTDOOR SPRAY

CODE: STOS | SPRAY CAN | VOLUME: 500ML

- For use on outer of outdoor clothing made from waterproof, windproof and breathable fabrics
- Also suited for use on other outdoor clothing, e.g. fleece and shoes
- Silicone free for ventilation



LEAK REPAIR

CODE: STPR | LIQUID | VOLUME: 80ML

- Leak repair for punctures and holes in PVC and vinyl
- Can be used underwater
- Includes applicator brush



SEAM SEALER

CODE: STSS | LIQUID | VOLUME: 85ML

- Waterproofing compound for use on inside of seams
- Includes applicator brush



CAMPER CLEANER

CODE: STCC | LIQUID | VOLUME: 500ML

- For use in caravans, campers, boats, cars and interiors, barbecues, garden furniture
- Removes algae, tar, insects, dirt
- Environmentally friendly



TENT CLEANER

CODE: STTC | LIQUID | VOLUME: 500ML

- Detergent for tents, garden parasols, sun shades, awnings, boat sails, chair cushions
- Removes seasonal soiling
- Environmentally friendly
- Treats approx. 50m² of material (e.g. canvas, cotton, dralon, acrylic, nylon, polyester, PVC coatings)

TEAR AID



RETAIL PACK

CODE: TAO | TYPE A GOLD
CODE: TAB | TYPE B BLUE
CODE: TAV | TYPE B GREEN
CODE: TAY | TYPE B YELLOW

- Includes 1 x 75mm (w) x 300mm (l) piece
- Plus additional small patches



WORKSHOP PACK

CODE: TAO2 | TYPE A GOLD
CODE: TAV2 | TYPE B GREEN

- Includes 1 x 75mm (w) x 1500mm (l) roll



INDEX

A

A-TYPE BEARING SET P59
ACTION CHAIRS P94
ADJUSTABLE ACCESSORIES P58
ADJUSTABLE GAS BOTTLE HOLDER P61
ADJUSTABLE LEGS P56
ADJUSTABLE STANDS P56
AIR BEDS, VELOUR P90
AIR PUMP, RECHARGEABLE P40
AIRER, FOLDING CLOTHES P9
ALUMINIUM DIRECTORS CHAIR P95
ALUMINIUM FOOT P57
ALUMINIUM SPREADER BARS P73
ALUMINIUM TENT POLES P72
ANNEXE MATTING, CARAVAN P20
ANODE P42
AWNING BRACKET P27
AWNING LIGHT-PC P45
AWNING PORCH, EXTENSION KIT P31
AWNING ROPE CLIP PACK P28
AWNING ROPE CLIPS P28
AWNING ROPE CRADLE BOX PACK P29
AWNING ROPE CRADLE PAIR P29
AWNING ROPE CRADLE POLE PACK, BLACK P29
AWNING ROPE CRADLE POLE PACK, WHITE P29
AWNING SUPPORT CRADLE, BLACK P28
AWNING SUPPORT CRADLE, WHITE P28
AWNING TENSIONER P27

B

BAG, ELECTRICAL LEAD P11
BAG, FRESH WATER P11
BAG, SULLAGE HOSE P11
BAG, TENT PEG P81
BAG, TENT POLE P69
BARGMAN STYLE LIGHT P45
BASINS P112
BASKET, COLLAPSIBLE P19
BEACH & SHELTERS P114
BEACH CHAIR P96
BEARINGS P59
BEDDING P88
BILLY TEA POT, ZEBRA P109
BIRD BEAK & PLATE P76
BOAT SETS P116
BONUS DROP PRIVACY SCREEN P30
BOSTON VALVE P90
BOW ENDS P77
BOW ENDS, SLOTTED P77
BOW ENDS, SQUARE P77
BOW KNUCKLE P75
BOW MOUNT P76
BOW MOUNT, LARGE PG76
BOW SHACKLES P59
BOWL, COLLAPSIBLE P18
BOWL, ZEBRA P108
BRIGHT BAR LIGHT P44
BUCKET, COLLAPSIBLE P19
BUNGEE CORD P87

C

CAMLOK P77
CAMP & OUTDOORS P63
CAMP BLUE, STIMEX P35
CAMP FLUSH, STIMEX P35
CAMP GREEN, STIMEX P35
CAMP QUAD CHAIR P94
CAMP SOFT P36
CAMPER CLEANER P128
CAMPING FAN, RECHARGEABLE P40
CAMPING HATCHET P122
CAMPING LIGHT, RECHARGEABLE P40
CAMPING SET, ZEBRA P110
CAMPSITE ACCESSORIES P120
CANVAS ACCESSORIES P127
CANVAS SHOWER P123
CANVAS TO CANVAS T TOGGLE P127
CARAVAN ACCESSORIES P16
CARAVAN ANNEXE MATTING P20
CARAVAN AWNING ACCESSORIES P2728
CARAVAN AWNING SAFETY STRAPS P28
CARAVAN FILTER P16
CARAVAN FRIDGE SCREEN P31
CARAVAN SINK PLUG P16
CASSETTE TANK CLEANER P36

CHAIRETTE P98
CHANGING STATION P119
CLAMP P54
CLOTHES AIRER P9
CLOTHESLINE, EASY HANG P9
COILS, MINI P86
COLANDERS, COLLAPSIBLE P17
COLLAPSIBLE CONTAINERS P17
COLLAPSIBLE COOKWARE P18
COMBINATION LAMPS, REAR P48
COMBINATION LAMPS, SLIMLINE P47
COMBINATION LAMPS, SLIMLINE REAR PG 46
COMBO SLIDE P86
COOKWARE P102
COOKWARE, CAST IRON P107
COUPLING LOCK, TWIN P59
CURVED ROOF RAFTERS P25
CURVED ROOF RAFTERS, SPARE PARTS P26

D

D RINGS P127
D SHACKLES P59
DE FLAPPER P27
DIRECTORS CHAIRS P95
DISH DRAINER, COLLAPSIBLE P17
DISPLAY BOX, POP TOP SUPPORT BAR P27
DOUBLE SEAT BOAT SET P116
DRINKING WATER HOSE FITTINGS P10
DRINKING WATER HOSE P10
DRINKING WATER HOSE, BLACK PG10
DUAL AXLE WHEEL CHOCK P8
DUAL AXLE WHEEL LEVELLING RAMP P8
DUTCH OVEN LID LIFTER P105
DUTCH OVENS P104

E

EASY HANG CLOTHESLINE P9
ELASTIC SHOCK CORD WITH HOOK P87
ELECTRICAL & 12V P38
ELECTRICAL LEAD BAG P11
ELECTRICAL LEAD P43
END WALL PRIVACY SCREEN P30
ENSUITE P34
EXTENSION TENT POLES P66
EXTENSION, AWNING PORCH KIT P31
EXTERIOR LED LIGHTING P45
EXTERNAL POLE CAP P75
EXTRA FLEXIBLE SULLAGE HOSE P10

F

FASTENER HOOK P87
FIAMMA PRIVACY SCREEN P31
FILTER, CARAVAN P16
FIRST AID KIT P16
FITTINGS, DRINKING WATER HOSE P10
FITTINGS, SULLAGE HOSE P11
FIVE POSITION HARD ARM CHAIR P96
FLAT PLUG, 7 PIN P42
FLAT SOCKET, 7 PIN P42
FLEXIBLE SULLAGE HOSE, EXTRA P10
FOLD IN HALF TABLE, SMALL P97
FOLDING CHAIRS & STOOLS P96
FOLDING CLOTHES AIRER P9
FOLDING DIRECTORS CHAIR P95
FOLDING STOOLS & CHAIRETTE P98
FOOT BELLOWS P117
FOOT, ALUMINIUM P57
FOOT, PLASTIC P57
FRESH WATER HOSE BAG P9
FRIDGE SCREEN, CARAVAN P31
FRYPAN, COLLAPSIBLE P18
FRYPANS, CAST IRON P106
FUEL DRUMS P113
FURNITURE P92

G

GAS BOTTLE HOLDERS P61
GAS BOTTLE HOLDERS, ADJUSTABLE P61
GRAB HANDLE LIGHT P45
GRIDDLE PANS P106
GUY ROPES P85

H

HAIR DRYER P43
HAIR STYLER P43
HAND PUMP, SINK P16
HANDLE P54
HATCHET, CAMPING P122
HIKER SELF INFLATING MATTRESS P90
HOLD TIGHT TARP GRIPPER P84
HOOK & LOOP TAPE P126
HOOK, SHOCK CORD P87
HOOP LEG STOOL P98
HORIZONTAL T TOGGLE P127
HOSE BAG, FRESH WATER P11
HOSE BAG, SULLAGE P11
HOSE, DRINKING WATER BLACK P10
HOSE, DRINKING WATER FITTINGS P10
HOSE, DRINKING WATER P10
HOSE, SULLAGE FITTINGS P11
HOSE, SULLAGE P10

I

INTERIOR LED LIGHTING P44
INTERNAL POLE CAP P75

J

JACK PAD, CARAVAN P58
JACK PAD, STACKER P58
JAFFLE IRONS P107
JAYCO, POP TOP SUPPORT BAR P27
JERRY CAN HOLDERS P60
JOCKEY WHEEL HOLDER, LARGE P54
JOCKEY WHEELS P52

K

KETTLE, COLLAPSIBLE P18
KIDS ACTION CHAIR P94
KING SIZE ACTION CHAIR P94
KNOB, SHOCK CORD P87

L

LADDER LOCK P127
LADDER STRAP, RUBBER P27
LARGE JOCKEY WHEEL HOLDER P54
LARGE RUBBER WHEEL HOLDER P54
LEADS, CARAVAN P43
LEAK REPAIR P128
LED LIGHTING P49
LED LIGHTING, EXTERIOR P45
LED LIGHTING, INTERIOR P44
LEGS, ADJUSTABLE CARAVAN P56
LEVEL, RV BLOCK SET P8
LEVELLING RAMP, DUAL AXLE P8
LEVELLING RAMP, SINGLE AXLE P8
LID LIFTER, DUTCH OVEN P9105
LIGHT, CAMPING RECHARGEABLE P40
LIGHTWEIGHT TABLE P97
LONG WALL PRIVACY SCREEN P30
LOOP HANDLE POT, ZEBRA P109
LOOP, SHOCK CORD P87
LUNCH BOX ROUND, ZEBRA P111
LUNCH BOX, ZEBRA P111

M

MAGAZINE HOLDER P16
MAINTENANCE & REPAIR P124
MALLETT P122
MARKER LAMPS P49
MARQUEE POLE P68
MATTING, CARAVAN ANNEXE P20
MIGHTY HIKER CHAIR, WANDERLITE P100
MINI COILS P86
MINI SPLITTER P122
MOUNTING BRACKETS P21
MUG, ZEBRA P108
MUG, ZEBRA WITH LID P108

N

NOMAD TABLE, WANDERLITE P101

O

OAR SETS P117
OUTDOOR CAMPING FAN, RECHARGEABLE P40
OUTDOOR SPRAY P128
OYSTER LIGHT P44

P

PEGGY PEG P82
PERSONAL TABLE P97
PIN FOR REPLACEMENT FOOT P57
PLASTIC FOOT P57
PLASTIC POLE GROUND PLATE P76
PLASTIC SAND PEGS P80
PLASTIC SLIDE ROPE KIT P85
PLASTIC SNAP CLIP P75
PLASTIC TENT PEGS, HANG SELL PG81
PLATE, ZEBRA P108
PLUG, 7 PIN FLAT P42
PLUG, CARAVAN SINK P16
POLE CARRIER P21
POLY WEBBING P126
POLYMER SLIDE P86
POLYMER SLIDE ROPE KIT P85
POLYPROPYLENE ROPE PG86
POP TOP PRIVACY SCREEN P30
POP TOP SUPPORT BAR DISPLAY BOX P27
POP TOP SUPPORT BAR JAYCO P27
POP TOP SUPPORT P27
PORTA PAK TOILET CHEMICAL P34
PORTABLE TOILET P36
PRIVACY SCREEN, BONUS DROP P30
PRIVACY SCREEN, END WALL P30
PRIVACY SCREEN, FIAMMA P31
PRIVACY SCREEN, LONG WALL P30
PRIVACY SCREEN, POP TOP P30
PRIVACY SCREENS P40
PULLER, TENT PEG P81
PUMP, SINK HAND P16
PUMPS P117

Q

QUICK ACTION CLAMP P77

R

READING LIGHT P44
READING LIGHT, DUAL COLOUR P45
RECTANGLE CONTAINERS- FOUR PACK P17
RETAIL PACK, TEAR AID P129
ROOF RAFTER, CURVED END P26
ROOF RAFTERS, CURVED P25
ROOF RAIL BRACKET P77
ROOF RAILS P71
ROPE CLIP PACK, AWNING P28
ROPE CLIPS, AWNING P28
ROPE CRADLE, AWNING PACKS P29
ROPE CRADLE, AWNING PAIR P29
ROPE, WHITE & SILVER P86
ROPES & PEGS P78
ROUND CONTAINERS- FOUR PACK P17
RUBBER LADDER STRAP P27
RUBBER RING P61
RUBBER TYRE P54
RUBBER WHEEL HOLDER P54
RUBBER WHEEL HOLDER, LARGE P54
RUBBER WHEEL, SOLID P54
RV & TRAILER HARDWARE P50
RV ESSENTIALS & ACCESSORIES P6
RV LEVEL BLOCK SET PG8

S

SACHETS, TOILET CHEMICAL P34
SAFETY STRAPS, CARAVAN AWNING P28
SAUCEPAN, COLLAPSIBLE P18
SAUCEPANS P107
SEAM SEALER P128
SEAT BELT WEBBING P126
SECURA BAR P24
SECURA BAR SPIGOT END P26
SECURA BAR, CARRY BAG P 24
SECURA BAR, SPARE PARTS P26
SEEKER TABLE, WANDERLITE P101
SELF ADHESIVE ROLLS P126
SELF INFLATING MATTRESSES P91
SHACKLES, BOW P59
SHACKLES, D P59
SHOCK CORD HOOK P87
SHOCK CORD KNOB P87
SHOCK CORD LOOP P87
SHOCK CORD P87
SHOVELS P122
SHOWER, CANVAS BUSH P123
SHOWER, SOLAR P123
SIDE RELEASE BUCKLES P127
SINGLE AXLE WHEEL LEVELLING RAMP P8
SINGLE SEAT BOAT SET P116
SINK HAND PUMP P16
SINK PLUG, CARAVAN P16
SLIDES P85
SLIMLINE COMBINATION LAMPS P46
SMALL FOLD IN HALF TABLE P97
SNAP CLIP, PLASTIC P75
SOCKET, 7 PIN FLAT P42
SOLAR SHOWER P123
SOLID RUBBER WHEEL P54
SPIGOT DOME & SPRING P76
SPIGOT DOME P76
SPIGOT P74
SPIGOT, 6MM PIN P74
SPIGOT, BENT P74
SPIGOT, HOOK BENT P74
SPIGOT, JAYCO BENT P74
SPIGOT, LONG P74
SPIGOT, S BEND P74
SPIGOT, SOLID ALUMINIUM P74
SPIGOT, THREADED P74
SPLICE CLIP P76
SPLITTER, MINI P122
SPREADER BARS P69
SPREADER BARS, ALUMINIUM P73
SPRING BUTTON CLIP P77
SQUARE C CLIP SUPPORT CLIP P75
STAINLESS STEELWARE, ZEBRA P108
STANDS, ADJUSTABLE P56
STARTER PACKS, CARAVAN P1213
STEEL DIRECTORS CHAIR P95
STEEL TENT PEGS P80
STEPS, CARAVAN P1415
STIMEX CASSETTE TANK CLEANER P36
STIMEX FABRIC TREATMENT P128
STIMEX TOILET CHEMICAL LIQUID P35
STIMEX WATER TANK CLEANER P36
STOCK POT, ZEBRA P110
SULLAGE HOSE BAG P11
SULLAGE HOSE FITTINGS P11
SULLAGE HOSE P10
SULLAGE HOSE, EXTRA FLEXIBLE P10
SUPER KING SIZE ACTION CHAIR P94
SWAG POLE P67
SWIVEL RAIL LIGHT P44

T

T LEVEL P16
T NUT & THUMBSCREW P76
T TOGGLE, CANVAS TO CANVAS P127
T TOGGLE, HORIZONTAL P127
T TOGGLE, VERTICAL P127
TABLES P97
TAPS, WATER & FUEL CONTAINERS P113
TARPS, TORNADO P84
TEAR AID P129
TENT CLEANER P128
TENT PEG BAG P81

TENT PEG PULLER P81
TENT PEGS, PLASTIC SAND P80
TENT PEGS, STEEL P80
TENT POLE ACCESSORIES P74
TENT POLE BAG P69
TENT POLES & SPREADER BARS P64
TENT POLES P66
TENT POLES, ALUMINIUM P72
TENTS & SHELTERS P119
TIE DOWN KIT P31
TIERED FOOD CARRIER, ZEBRA P111
TIERED LUNCH BOX, ZEBRA P111
TIMBER SLIDE P86
TIMBER SLIDE ROPE KIT P85
TOASTERS P107
TOILET CHEMICAL LIQUID, STIMEX P35
TOILET CHEMICAL SACHETS P34
TOILET PAPER, CAMP SOFT P36
TOILET, PORTABLE P36
TORNADO TARPS P84
TORNADO TARPS, SHELF READY CARTON P84
TOUR & RV P5
TRACE SPRINGS P86
TRAILER ACCESSORIES P59
TREKWAY CROSS LEG STRETCHER P91
TREKWAY SELF INFLATING MAT P91
TRI LEG STOOLS P96
TRIGLIDES P127
TRIPODS P105
TUBS, COLLAPSIBLE P19
TWIN COUPLING LOCK P59
TYRE, RUBBER P54

U

ULTRA HIKER CHAIR, WANDERLITE P100
ULTRA SLIM LIGHT P44
UTILITY TABLE P97

V

VELOUR AIR BEDS P90
VENETIAN BLIND CORD P86
VERTICAL T TOGGLE P127
VOYAGER CHAIR, WANDERLITE P100

W

WANDERLITE LIGHTWEIGHT FURNITURE P100
WASH TUB/SINK, COLLAPSIBLE P19
WATER CONTAINERS P112
WATER CUBES P112
WATER JERRY CANS P112
WATER TANK CLEANER P36
WATER, DRINKING HOSE P10
WATERPROOFER P128
WEBBING, POLY P126
WHEEL CHOCK P8
WHEEL CHOCK, DUAL AXLE P8
WHEEL LEVELLING RAMP, DUAL AXLE P8
WHEEL LEVELLING RAMP, SINGLE AXLE P8
WHEEL RAMPS & CHOCKS P8
WHEELS, JOCKEY P52
WHISTLING KETTLE, ZEBRA P109
WHITE & SILVER ROPE P86
WINDOW BRACKET P76
WORKSHOP PACK, TEAR AID P129

X

-

Y

-

Z

ZEBRA STAINLESS STEELWARE P108



supex

2024